



Lab Test Report

A Comprehensive Keypoint Intelligence Laboratory Evaluation

KYOCERA TASKalfa 8003i

80 PPM Monochrome | Print • Copy • Scan • Fax



| | |
|---------------------------|-----------|
| ● Reliability | 9.5 |
| ● Apps/Onboard Tools | Not Rated |
| ● Image Quality | 7.5 |
| Print Quality | 7.5 |
| Copy Quality | 7.0 |
| ● Usability | 8.0 |
| Serviceability/Management | 7.5 |
| Walk-up Experience | 8.0 |
| Workstation Experience | 8.5 |
| ● Security | 9.0 |
| ● Specifications | 8.5 |
| ● Speed | 8.0 |
| Print Speed | 8.0 |
| Scan Speed | 9.5 |
| Copy Speed | 6.0 |
| ● Power Consumption | Not Rated |



OUR TAKE

The KYOCERA TASKalfa 8003i performed extremely well in Buyers Lab's extensive lab test evaluation, proving to be a highly reliable product and an outstanding choice overall for large workgroups. Thanks to outstanding reliability, and the ease in which paper can be loaded, high paper capacities, and simple procedures for clearing misfeeds, downtime will rarely if ever be an issue. Print and copy quality were highly effective as well. While the device's control panel has some limitations among competing devices, usability was found to be very good overall. The control panel was intuitive and easy to navigate, and it supports the creation of shortcut keys and up to 50 job programs to streamline workflows for scan and copy jobs. The driver, too, offers above average guidance and custom profile creations that can be named and prioritized; comments describing the settings for each profile can also be added. A large QWERTY keypad and fast scan speeds make programming and delivery of scan destinations easy and fast, not to mention the smaller-than-average compressed file size of scanned colour documents helps optimize the device's storage space. Tested print speeds were also faster than the times of other competing devices overall. The TASKalfa 8003i is also HyPAS-enabled, allowing for seamless integration of customized workflow solutions to streamline complex tasks, reduce costs, and enhance security. Standard WiFi-Direct and NFC and support for Apple AirPrint®, Google Cloud Print®, and Kyocera Mobile Print® let users quickly and easily print from mobile devices. A very strong feature set solidifies the unit's very good value.

KYOCERA TASKalfa 8003i Fast Facts*

| | |
|---|--|
| SRP/Street Price | €15,060 (Germany) |
| Max Monthly Duty Cycle | 450,000 impressions |
| Manufacturer's Recommended Monthly Volume | Info not avail |
| Rated Speed | 80 ppm |
| Std Paper Source(s) | Dual drawer, dual tray |
| Std Paper Capacity | 4,000 sheets |
| Paper Weights | 60 to 256 gsm |
| Bypass/Paper Weights | 150-sheet/60 to 300 gsm |
| Max Paper Capacity | 7,650 sheets |
| System Memory (Std/Max) | 4.5-GB RAM, 8-GB RAM |
| Document Feeder/ Capacity | DSPF/270 originals |
| PDL/PCL | PCL 5/6/XL, PostScript 3, PRESCRIBE, XPS, Open XPS |
| HDD (Std/Max) | 320-GB HD/320-GB HD |
| Scanner Technology/Speed | 120 ipm colour, 120 ipm black |

Test Duration: Two months, including a 450,000-impression durability test.

The scores herein represent Excellent (9-10), Very Good (7-8.5), Good (4-6.5), Fair (1.5-3.5) and Poor (0-1).

Please visit www.buyerslab.com/bliQ for more information.

BENEFITS

- Maximize uptime thanks to outstanding reliability and easy maintenance procedures
- Robust feature set
- High quality output that easily meet the needs of general office environments
- Easy to use web user interface, detailed feedback, and ease of misfeed removal simplify administrator and service tasks
- Above average guidance and custom profile creations make for an outstanding user experience from the driver
- Streamline scan and copy workflows with user by user control panel customization that includes shortcut keys and up to 50 job programs
- Print from anywhere with mobile printing support for both Android and Apple devices
- Take advantage of KYOCERA's HyPAS Platform to connect to specialized and embedded applications

ADVANTAGES

- Above average memory means faster processing of data
- Above average paper capacity means less time spent having to refill paper
- Fast job stream time among peers signifies elite productivity performance in multi-user environments
- Short and long-run jobs in simplex print mode were also the fastest or among the fastest of the group
- Scan speeds were the fastest or among the fastest tested to date among peers
- Compressed colour file size of scanned media is smaller than average
- Faster-than-average first-copy times
- Excellent halftone range and fill in print and copy modes
- Text appeared dark, crisp, and clean throughout print image quality testing

LIMITATIONS

- No support for alternate simple scan or copy menus
- The web user interface does not support a built-in search function to quickly locate device settings and administrative tasks, nor does it support shortcut creation to store tabs or settings frequently accessed
- Scan and copy previews do not support page deletion or onscreen editing

- Limited slide/swipe navigation at the control panel
- Driver details on why settings are incompatible is limited
- Unable to store extensions nor save domains as one-touch keys to the scan display
- Only quantity can be modified for jobs in queue
- No digital signature for job tracking; no support for MAC filtering for security

▲ RELIABILITY

9.5

- The unit is certified highly reliable by Buyers Lab, completing a 450,000-impression durability test with five misfeeds recorded and no service required.

| | |
|---------------------|----------|
| Impressions Printed | 450,000 |
| Misfeeds | 5 |
| Misfeed Rate | 1/90,000 |
| Service Calls | 0 |

▲ APPS/ONBOARD TOOLS

Not Rated

- KYOCERA's HyPAS Platform offers both Java-based and Web Services-based software development kits. According to KYOCERA, this approach provides a more open and flexible developer environment, which enables integration with systems that are already implemented in a customer's enterprise. DocuWare Connector serves as a bi-directional bridge between HyPAS-enabled and capable MFPs, and DocuWare on-premises and cloud-based enterprise content management systems.
- "Send To Me" comes preloaded on the device, and supports the ability to automatically send an email back to an authenticated user's e-mail address. In addition, the embedded fax server can send fax documents to a fax server, and additionally utilize the LDAP address book and cover pages. This works with most fax server platforms and can easily be navigated from the main display panel.
- Teaching Assistant is an embedded app available in single-user licences, and does not need to be networked and does not need to utilize the cloud. In addition, PinPoint Scan does not need an administrator setup and also works directly off of the MFP. These offerings can be pushed down remotely from dealers to customers for a trial run.

- KYOCERA only provides applications through authorized dealers and direct sales channels and does not offer a public-facing app where customers can download new apps. According to KYOCERA, this ensures the applications are deployed and configured properly, and prevents any conflict with the client's security requirements, and/or best business practices.
- KYOCERA applications support direct bidirectional interface with Google Cloud Services and Microsoft Cloud Services full suites.

IMAGE QUALITY

7.5

| | Print Mode | Copy Mode |
|------------------|------------|-----------|
| Text | Very Good | Good |
| Line Art | Very Good | Very Good |
| Halftone Pattern | Very Good | Very Good |
| Halftone Range | Excellent | Excellent |
| Solids | Very Good | Very Good |

PRINT QUALITY

7.5

- Dark, sharp and fully formed text, with no signs of breakup under magnification
- Distinct fine lines, with consistent thickness, smooth circles and diagonal lines, with no evidence of breakup or stair-stepping, but toner overspray is evident under magnification
- Halftone fill displayed average smoothness, with distinct transitions between every level and no signs of banding
- Bold solids

Print Density

| | Tested Device | Competitive Average |
|-------|---------------|---------------------|
| Black | 1.43 | 1.37 |

Measurements are based on four readings corresponding to four different solid black locations on the output. The higher the density reading, the darker the image.

Visible Halftone Range

| | |
|------------------------|---|
| KYOCERA TASKalfa 8003i | Halftone output was visible from the 10% to 100% dot-fill levels, with distinct transitions between all levels. |
|------------------------|---|

The halftone range test original consists of 10 blocks of increasing dot-fill levels (10 to 100%, in 10% increments).



COPY QUALITY

7.0

- Text is bold and no overspray or halo are evident, but characters appear jagged on curves and straight lines.
- Distinct fine lines, with consistent line thickness, but some stair-stepping is evident
- Distinct separation between levels over the entire range of greyscale, and smooth dot-fill with no banding
- Dark solids, with smooth toner coverage

Copy Density

| Original | Tested Model | Competitive Average |
|----------|--------------|---------------------|
| 1.61 | 1.41 | 1.39 |

Measurements are based on two readings corresponding to two different solid black locations on the output. The higher the density, the darker the image.

Visible Halftone Range

| | |
|------------------------|--|
| KYOCERA TASKalfa 8003i | Halftone output was visible from the 15% (which is the minimum coverage area on the original) to 100% dot-fill levels, with distinct transitions between all levels. |
|------------------------|--|

The halftone range test original consists of eight blocks of increasing dot-fill levels (15%, 29%, 53%, 77%, 83%, 91%, 95%, 100%).

USABILITY

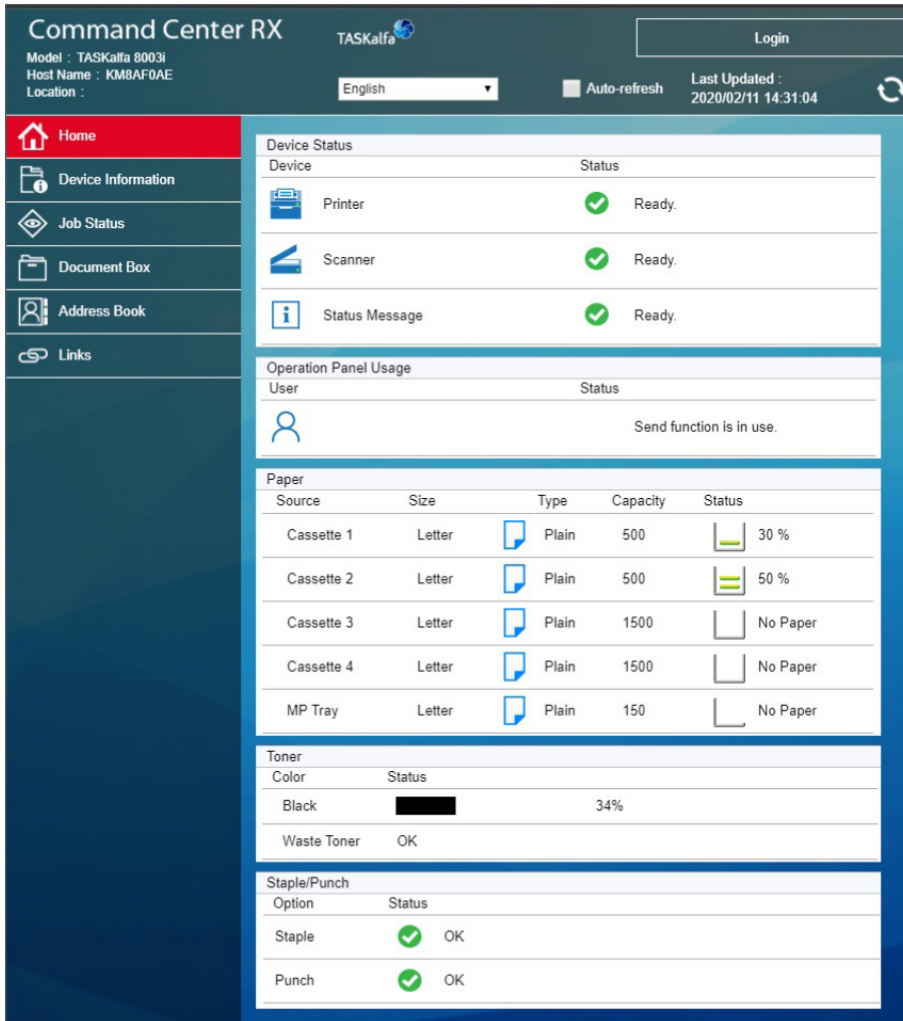
8.0

SERVICEABILITY/MANAGEMENT

7.5

| | |
|-------------------|-----|
| IT Administration | 7.5 |
| Setup | 8.0 |
| Utilities | 7.0 |
| Maintenance | 7.5 |

- KYOCERA Fleet Services (KFS) is a web-based service that streamlines remote fleet maintenance. The cloud-hosted solution enables administrators to view device status and easily identify and execute high-level maintenance tasks from anywhere, thus reducing service costs by circumventing on-site visits from technicians. It also includes a Remote Panel feature that allows administrators to remotely access the end users' operation panel to assist in navigation without a technician on site.
- The web user interface is logically organized and easy to use. It's highly intuitive for administrators to customize default and output settings for print, scan, copy, email, and scan to folder jobs. For the control panel itself, administrators can customize the Home screen, taskbar, status display, function settings, and backgrounds. The six function keys most prevalent in each of the scan and copy menus can also be customized.
- Optional remote operation allows an administrator to operate the control panel from a PC and interact virtually across networks.
- Unlike with some competitors a built-in search function to quickly find device settings and administrative tasks is not supported. Administrators also cannot create a shortcut when on a tab or settings page frequently used.
- In addition to dynamic guidance to aid in clearing misfeeds, misfeed areas are highly accessible from the drawers and LCT. Drawers 1 and 2 easily lift out of place, with no tilt, the full drawer lifts straight up (sits on pins), and the LCT pulls out enough for the user to get hands behind.



Command Center RX TASKalfa Login
 Model : TASKalfa 8003i
 Host Name : KM8AF0AE
 Location : English Auto-refresh Last Updated : 2020/02/11 14:31:04

Home
 Device Information
 Job Status
 Document Box
 Address Book
 Links

| Device Status | | Status |
|----------------|--|--------|
| Printer | | Ready. |
| Scanner | | Ready. |
| Status Message | | Ready. |

| Operation Panel Usage | | Status |
|-----------------------|--|--------------------------|
| User | | Send function is in use. |

| Paper | | | | | | |
|------------|--------|------|----------|--------|--|----------|
| Source | Size | Type | Capacity | Status | | |
| Cassette 1 | Letter | | Plain | 500 | | 30 % |
| Cassette 2 | Letter | | Plain | 500 | | 50 % |
| Cassette 3 | Letter | | Plain | 1500 | | No Paper |
| Cassette 4 | Letter | | Plain | 1500 | | No Paper |
| MP Tray | Letter | | Plain | 150 | | No Paper |

| Toner | | Status |
|-------------|----|--------|
| Color | | 34% |
| Waste Toner | OK | |

| Staple/Punch | | Status |
|--------------|--|--------|
| Option | | OK |
| Staple | | OK |
| Punch | | OK |

The main screen of the web user interface, Command Center RX, includes notifications and gauges on the status of the device including device state, and paper drawers and consumables in percent increments. Print, scan, and copy usage can be restricted and tracked by user and group. Up to three event reports can be set up and scheduled for when to add paper, add toner, cover open, paper jam, low toner, waste toner replacement, and other errors.



Both length and width guides slide in sync when adjusting paper size in the drawers and have blue locking tabs for easy view. The drawers also feature easy-to-see limit indicators, and soft close once paper is loaded.

Consumable Rated Yields

| Component | Competitive Average | Tested Model |
|----------------------|---------------------|--------------|
| Black Toner | 73,622 | 70,000 |
| Black Photoconductor | 662,500 | 600,000 |
| Black Developer | 737,500 | 600,000 |

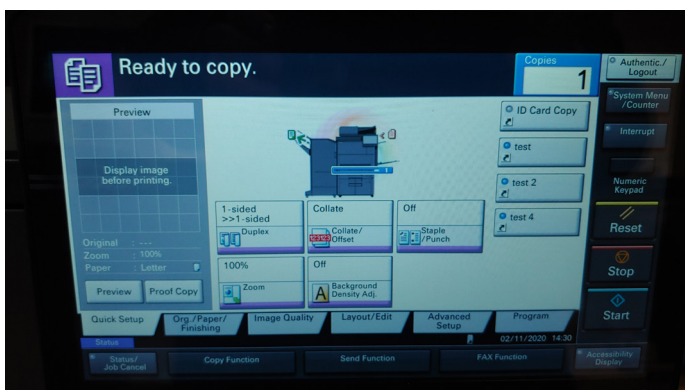


WALK-UP EXPERIENCE

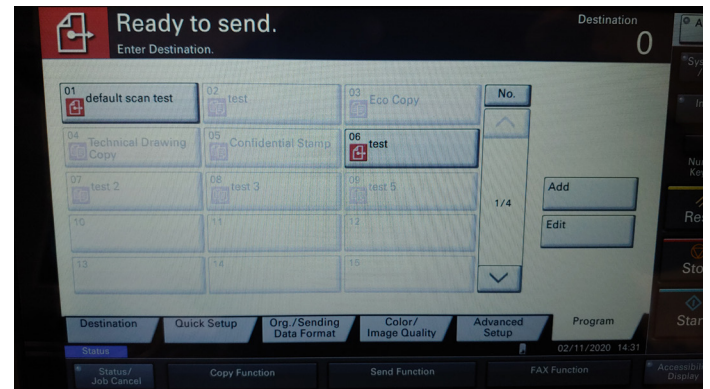
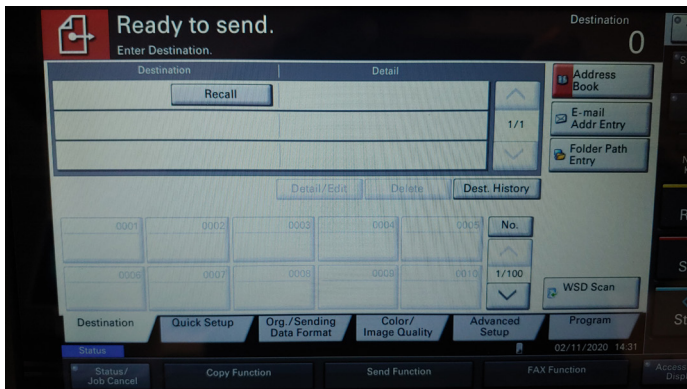
8.0

| | |
|----------------|-----|
| Scan | 7.5 |
| Copy | 9.0 |
| Job Management | 7.0 |
| Multitasking | 7.5 |

- The 256-mm control panel is entirely touch outside of the Home hard key and is fully tiltable. However, slide/swipe navigation is limited to the Home screen only after 9 or more functions have been stored, and would further simplify the usability of the control panel.
- The Help button on the device tool bar is robust, listing three pages of explanations of basic operations, six pages of functions, and one page of trouble shooting skills.
- The Home screen, taskbar and Quick Setup tab for copy can be customized on a user by user basis with authentication. Functions can be added and removed, and relocated. Up to 50 job programs are supported and can be added to the Home screen.
- The system does not support simple scan or copy interfaces, but both screens can be enlarged for the visually impaired.
- Scan preview allows users to pinch and enlarge the view, and navigate through pages, but does not support changing the order of pages, page deletion or onscreen editing. There is also no support for slide/swipe navigation through pages. All jobs are also supported under one queue, whereas preferred would be the ability to view not only all jobs in one queue, but view different queues per job type. Time to job completion is also not supported.



Navigating the control panel interface is simple and intuitive overall. Most commonly used scan and copy functions are selectable from each menu's first screen, helping to maximize efficiency. In addition, users can easily navigate to the scan or copy menus without having to return to the Home screen.



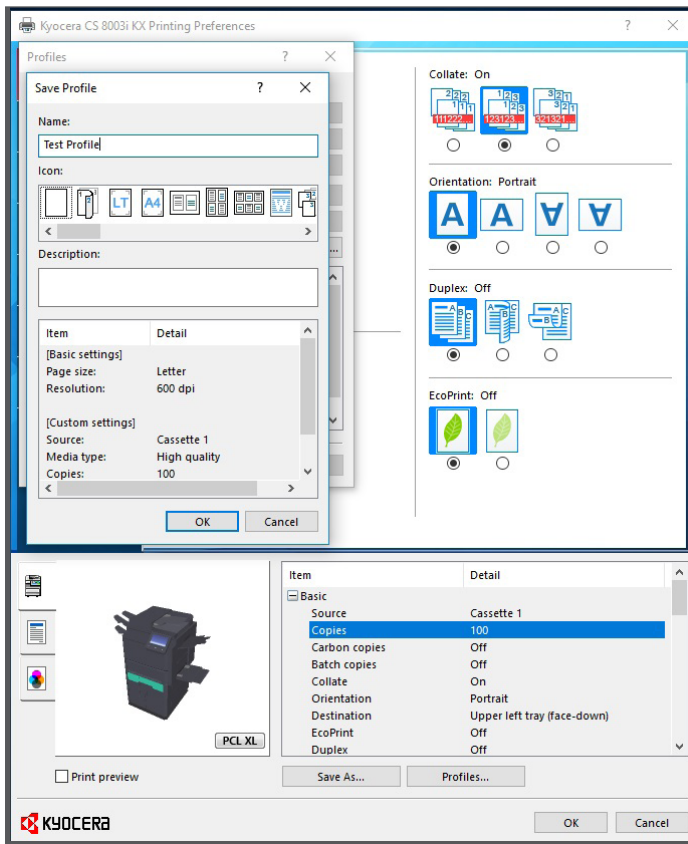
The scan and copy menus can also be customized on a user by user basis by adding up to six shortcuts for functions that can be found under the System Menu button on the Home screen taskbar. In addition, up to 50 job programs can be saved within the scan or copy menus, or even on the Home screen, to streamline workflow of commonly run jobs. The order of features on the home page and the Quick Setup tab can be prioritized as well.

WORKSTATION EXPERIENCE

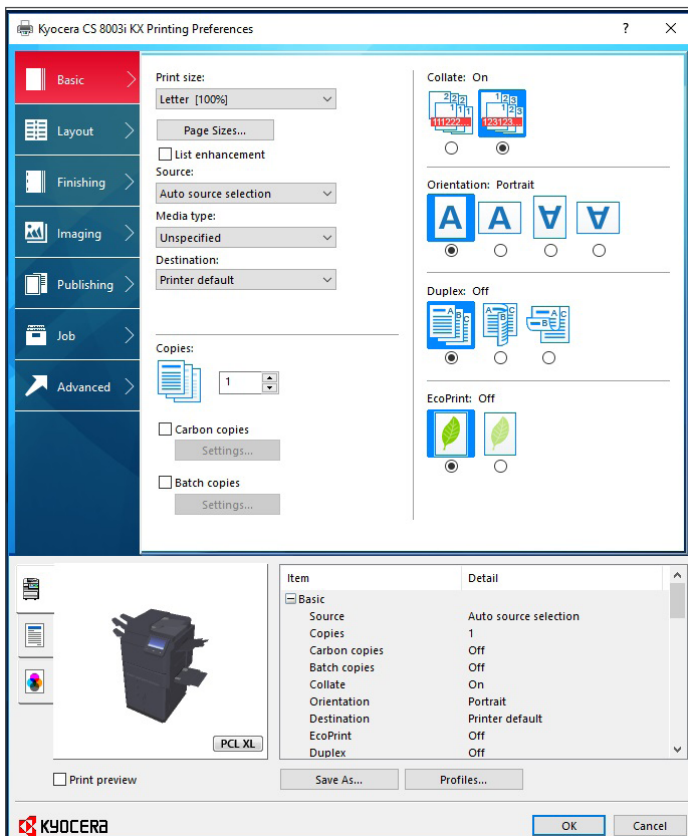
8.5

| | |
|----------|------|
| Print | 8.5 |
| Feedback | 10.0 |

- The level of guidance in the print driver is above average, with a question mark icon that users can drag to different features on any tab of the drivers and select for detail on how to utilize that function.
- The driver includes Eco Print (reduces the amount of toner used) and Print Preview (provides on-screen preview of every page of the job, along with the ability to zoom in and cancel the job). However, no changes can be made to the document from the preview function.
- Any driver settings that are not compatible are greyed out and not selectable, whereas some competitors allow users to scroll over the greyed out settings with their mouse and receive a pop up on how to get the setting to work.
- The Batch Copies feature separates copies of a print job into different batches by enabling the user to select the number of copies in each batch. Users can name each batch printing job and save its settings for future use. A cover page can be added to each batch, printed with an optional job name and title. The cover page can be a different size, media type, and orientation from the main document. A storage device must be installed or RAM disk enabled in order for this feature to be used.



While an entire tab of the driver cannot be customized, users can save custom profiles that are stored as graphical icons via the Quick Print tab to allow programming of complex jobs in one click. Users can click on the Save As button on any of the tabs to save currently selected settings, name the new profile, and add a description for storage on the Quick Print tab. The order of custom profiles can also be prioritized.



Most typical print job settings are selectable from the Basic tab, including paper type and source, duplex, EcoPrint On/Off, quantity, and collate sets, although finishing selections such as stapling are programmable from the Finishing tab.

▲ SECURITY

9.0

- Standard secure print, encrypted secure print, encrypted scanning, and encrypted USB scanning
- Standard hard drive overwrite and encryption
- Optional ID card authentication
- Administrators can limit or restrict access to the control panel and the USB port
- No support for digital signature
- No support for MAC filtering

▲ SPECIFICATIONS

8.5

- The device provides standard WiFi-Direct and NFC support for Android mobile devices. The optional IB-51 for wireless LAN interface extends communication distance to 100 metres.
- Mobile printing is also supported via Apple AirPrint, Google Cloud Print, and Kyocera Mobile Print.
- Above average memory means faster processing of data.
- Above average paper capacity means less time spent having to refill paper.
- Optional 270-sheet duplex single pass feeder supports multi-feed detection to minimize risk of misfeeds and scans at 120 ipm.
- Optional 4,000-sheet finisher has the capability to manually staple up to 100 sheets.

▲ SPEED

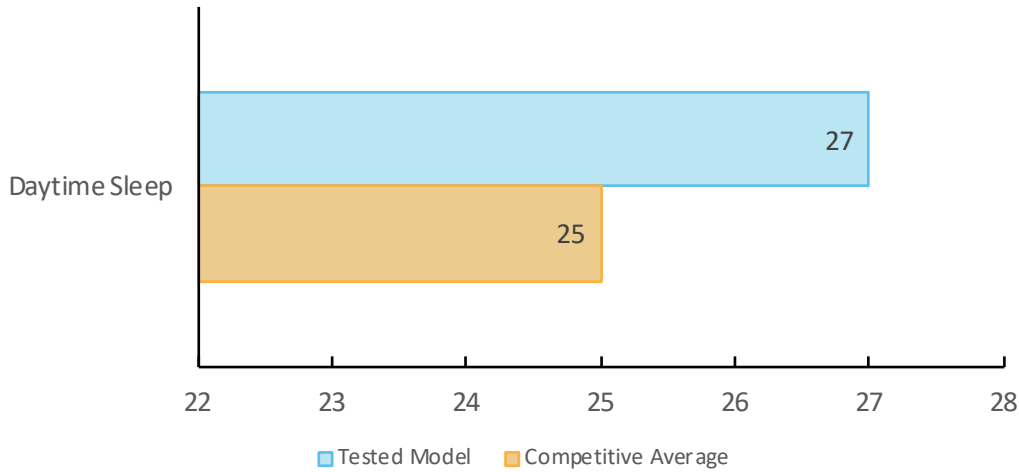
8.0

▲ PRINT SPEED

8.0

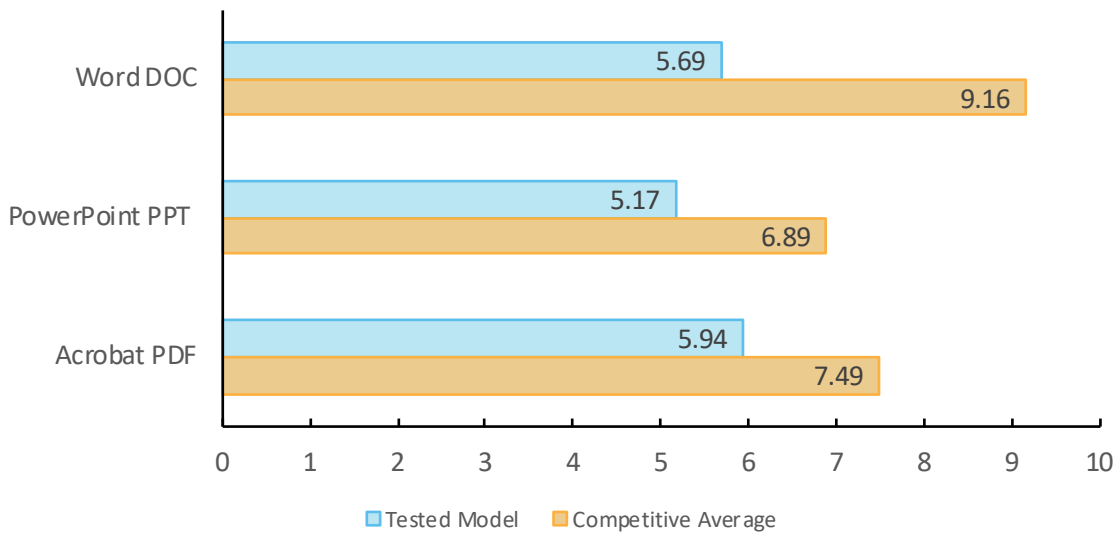
Print speeds were faster than average overall. Job stream speed in particular, which entails the programming of different job types to simulate real-world print environments was the fastest of the group. Short and long-run jobs in simplex mode were also the fastest or among the fastest of the group.

Recovery Times (in Seconds)



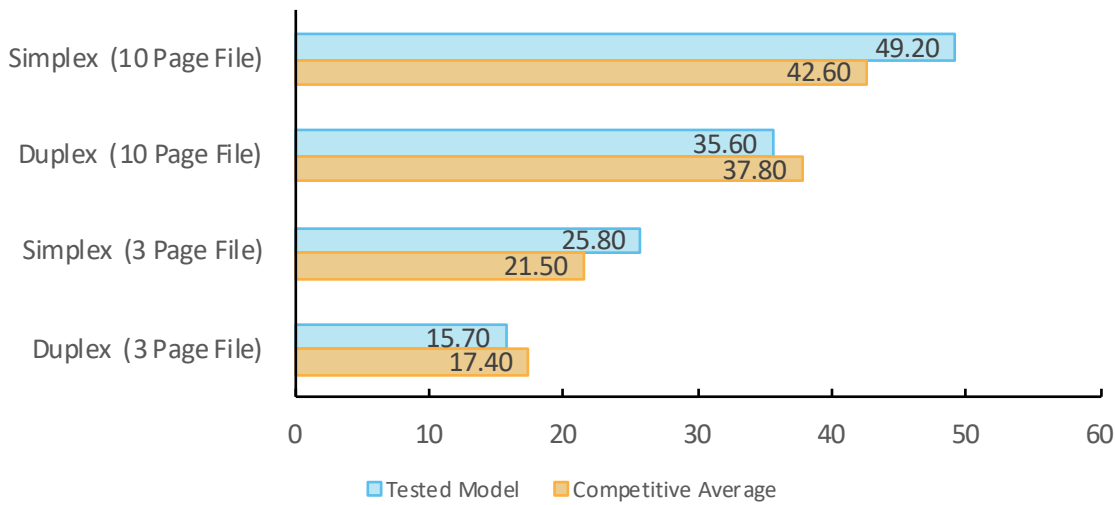
Recovery time in seconds indicates the time it took to warm up, process the image and deliver a single-page test document to the output tray. The unit was tested with the PCL driver.

First-Page Print Time From Ready Mode by File Type (in Seconds)



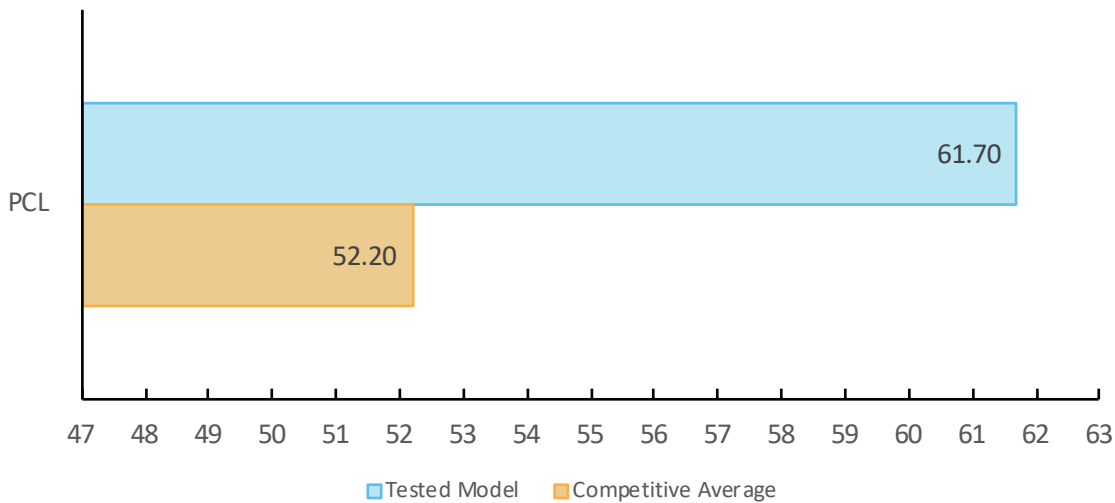
Single-set speed is tested using Buyers Lab's proprietary 3-page and 10-page testing documents. The unit was tested using the PCL driver.

First-Set Print Speed (Single Set; in PPM)



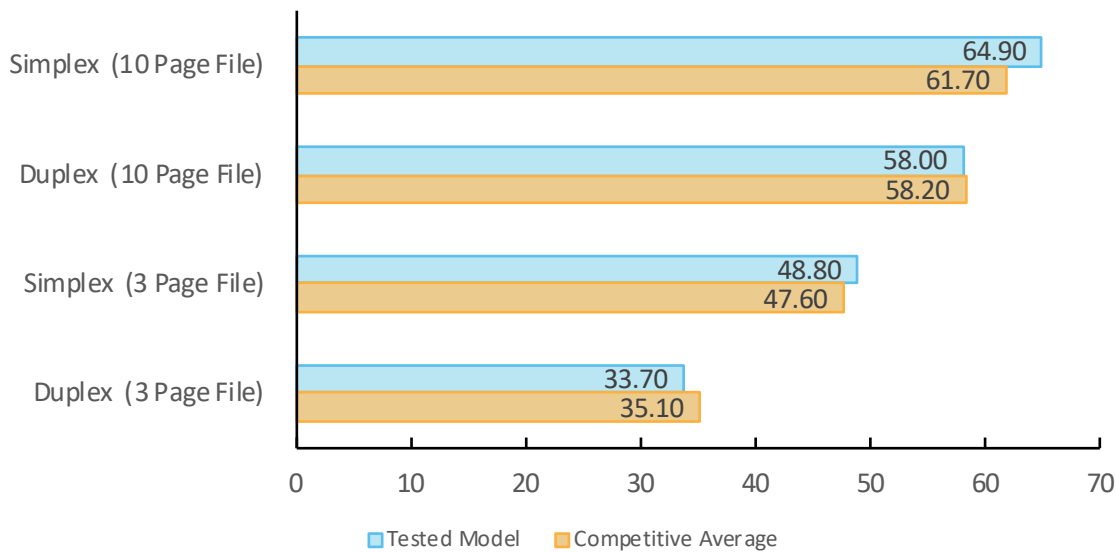
First-print time indicates the time it took to process the image and deliver a single-page test document to the output tray. The unit was tested using the PCL driver.

Job Stream Test (in PPM)



BLI's job stream includes Word documents, Outlook email messages, Excel spreadsheets, PowerPoint, HTML and Acrobat PDF files, totalling 19 pages. This test simulates the type of traffic a typical device might experience in a real-world, multi-user environment. All of the files are sent to the device as a group, at which time the stopwatch begins; timing ends when the last page of the last file exits the device.

Average Print Speed (Multi-Set; in PPM)



Speed is tested using Buyers Lab's proprietary 3-page and 10-page testing documents. Buyers Lab obtains the overall speed by averaging the tested speed for each run length (1, 5, 10, and 20 sets). The unit was tested using the PCL driver.

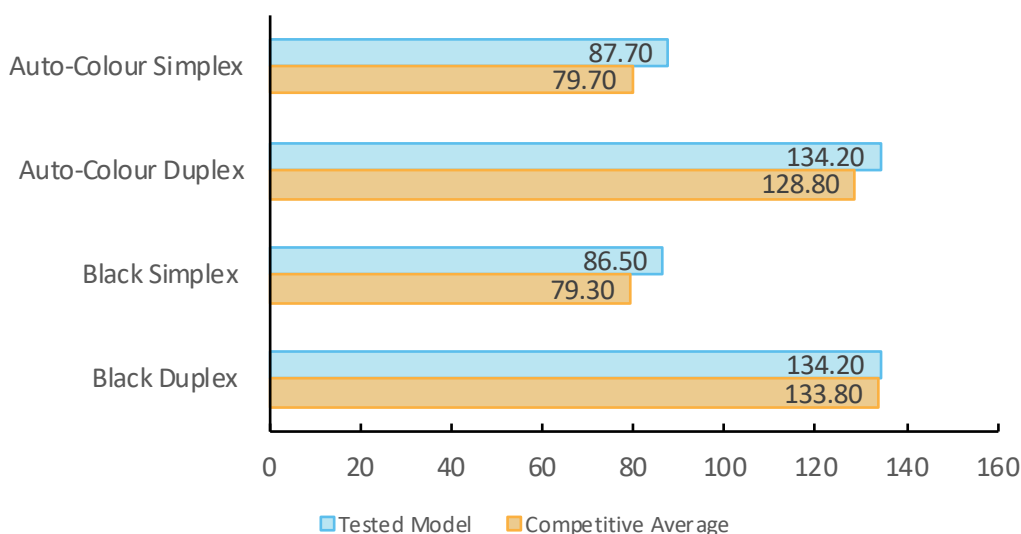
Tests were conducted using U.S. letter-size paper; A4 results may vary slightly.

SCAN SPEED

9.5

Scan speeds were the fastest or among the fastest tested to date among its peers. Colour file size was smaller than average when compressed. No compression exists in black-and-white mode, but scan file size is relatively competitive to other non-compressed files.

Scan Speed (in IPM)



Testing is conducted with a 10-page file scanned in default mode at 300 dpi in PDF format.

Tests were conducted using U.S. letter-size paper; A4 results may vary slightly.

Scan File Size (in KB)

| | Tested Model | Competitive Average |
|-----------------------------------|--------------|---------------------|
| Auto-Colour (Default Compression) | 143.0 | 514.0 |
| Auto-Colour (Best Compression) | 117.0 | 138.0 |
| Black (Default Compression) | 46.0 | 44.0 |

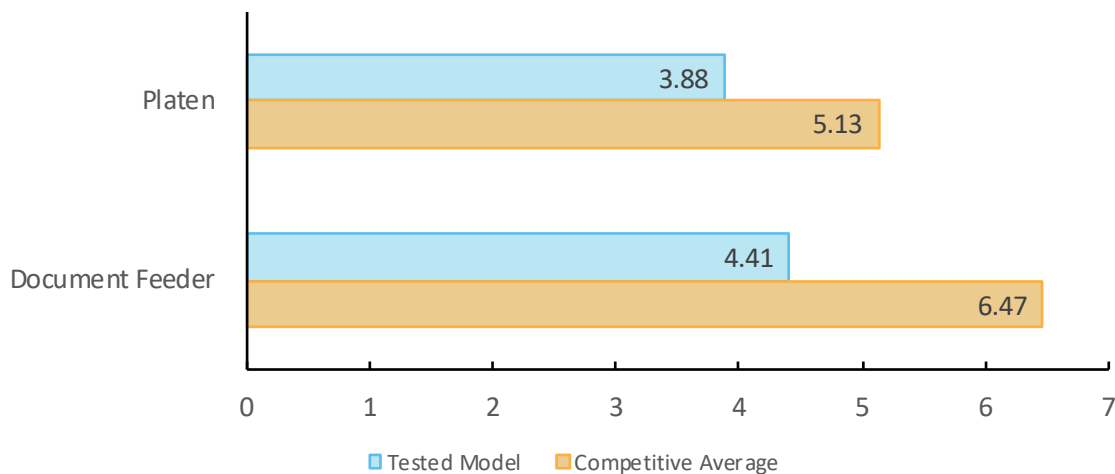
Testing is conducted with single-page files scanned at 300 dpi in PDF format.

COPY SPEED

6.0

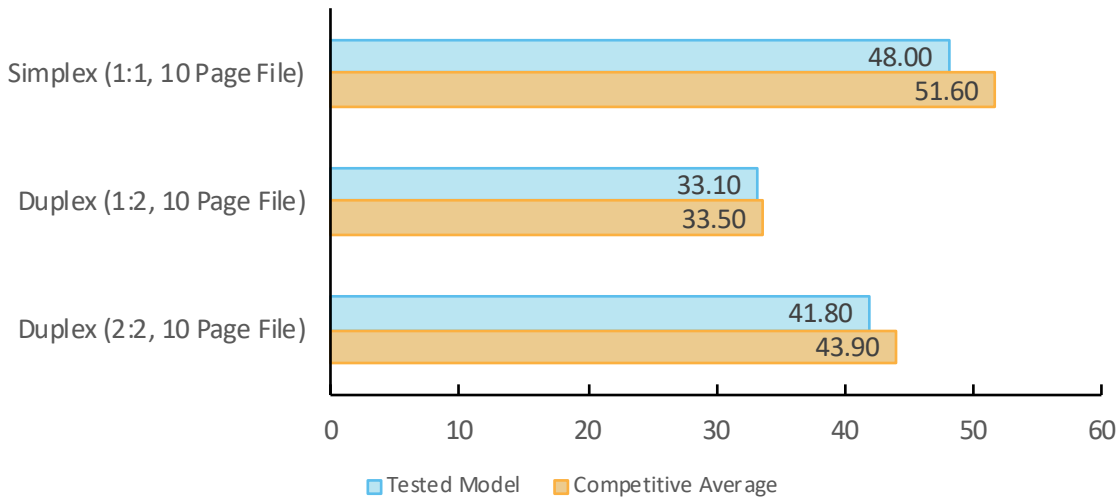
Copy speeds were generally competitive, but first-copy times were faster than average.

First-Copy Times (in Seconds)



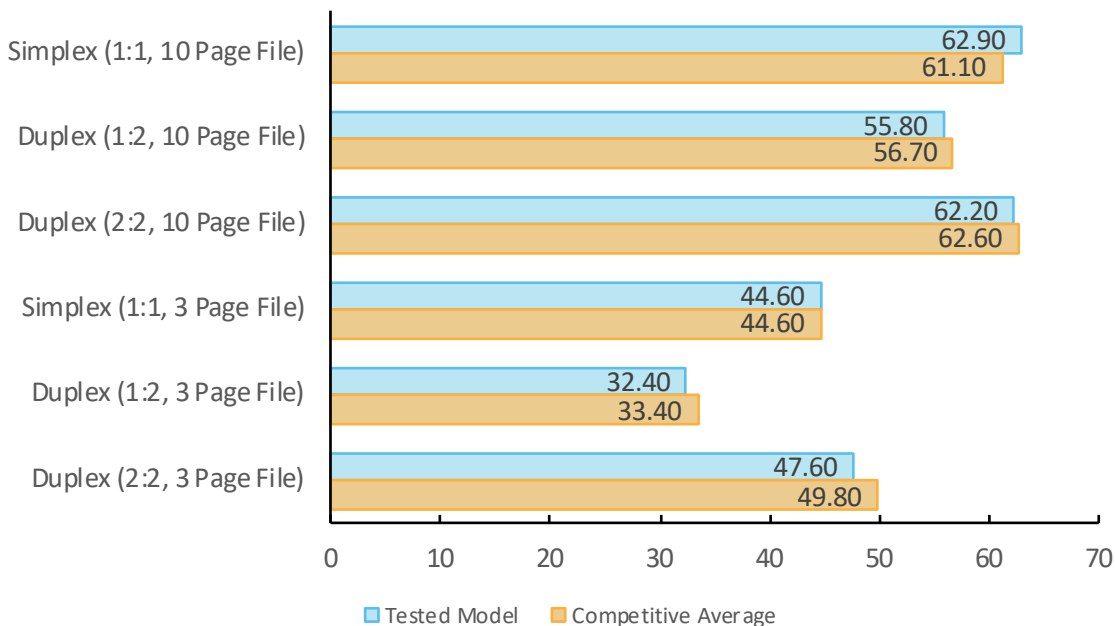
First-copy time is measured as the time it takes for a single copy to completely exit the device when a copy is made from an original placed in the document feeder and on the platen.

Single-Set Copy Speed (in CPM)



Single-set copy speed is tested using 3-page and 10-page mixed-colour and black documents. Timing begins as the start button is pressed, pages are scanned through the document feeder and timing ends when the last page of a single-set of the document exits the device.

Average Copy Speed (in CPM)



Copy speed is tested using 3-page and 10-page mixed-colour and black documents. Buyers Lab obtains the overall speed by averaging the tested speed for each run length (1, 5, 10, and 20 sets).

Tests were conducted using U.S. letter-size paper; A4 results may vary slightly.



POWER CONSUMPTION

Not Tested

Projected Annual Energy Consumption (in kWh)

| | |
|------------------------------|---|
| Total Annual Energy Consumed | 227.7592 |
| Competitive Average | 254.9468 |
| Pages Printed | 1,134 total - 6 jobs of 189 pages each |
| Test Documents Used | DOC, XLS, PPT, HTML, PDF, Outlook e-mail messages |
| Output Modes | 50% simplex, 50% duplex |

Calculations based on printing Buyers Lab's job stream test suite over a four-hour period, with the machine set to go into its energy-save and/or sleep modes at the shortest intervals possible. Total yearly energy consumption is calculated based on the total energy used during a typical workday, plus overnight and weekend sleep energy. Total number of pages run is based on a Buyers Lab survey of average monthly volumes by speed range.

Environmental Features

| | |
|---|---------------------------------------|
| Specified capable of running recycled paper (30%/50%/100% post-consumer content) | Yes |
| Instant/Quick Fusing | Yes |
| Duplexing | Yes |
| Toner-save mode | Yes |
| RoHS compliant | Yes |
| Toner cartridge recycling program for this product | Yes |
| Ability to program features such as duplexing and auto shut-off over entire fleet | Yes |
| What tool can be used to do this? | INA |
| Eco-Label Certifications | |
| ENERGY STAR | Yes |
| Other | ECMA-370/The Eco; EPEAT level pending |

INA: The vendor declined to provide this information
 NA: Not applicable

SUPPORTING TEST DATA

Test Environment: This product was tested in Buyers Lab's US test lab, in an environment monitored by two Temp/RH chart recorders, which ensures that the typical office conditions are being maintained. All products lab tested by Buyers Lab are powered by dedicated circuits.

Test Equipment: Buyers Lab's dedicated test network in the US, consisting of Windows 2008 servers, Windows 7, and 8 and 10 workstations, 10/100/1000BaseTX network switches and CAT5e/6 cabling.

Test Duration: Products are tested for two months, a portion of which consists of a durability test during which the product is run at half of its manufacturer-rated maximum monthly volume, with 25 percent of the test volume comprised of copy jobs and 75 percent comprised of print jobs. Buyers Lab's daily test usage is designed to replicate real-world use over an eight-hour workday, and as such includes a mix of various-size documents, simplex and duplex modes, and a mix of short, moderate and long run lengths, and on/off cycles, throughout the day.

Tested Configuration: KYOCERA TASKalfa 8003i base unit, plus DF-7130 4,000-sheet Finisher, staple, and hole punch.

Competitive Average Model Group: Buyers Lab defines competitive models as comparably equipped models, that support the same maximum paper size as the tested model, in the same speed range (+/- 5ppm), with a similar duty cycle and target market. Tested speed performance is compared to competitive devices in this speed range tested to date. For all other sections that have data analysis, comparisons are made against competitive devices in this speed range.

Test Procedures: Buyers Lab's lab testing includes both Buyers Lab proprietary and industry-standard test procedures and documents. The reliability test is conducted using Georgia Pacific and Boise paper in the US, and UPM, Data Copy and Mondi paper in the UK. In both labs, 30 percent of the paper is recycled. The media used for image quality testing is Georgia Pacific Printing Paper (24 lb., 96 brightness) in the US and UPM Future ImageTech 100 gsm in the UK.

Note: This report is based on Buyers Lab testing one representative test sample at a specific point in time. Buyers Lab is not responsible for differences in performance that may be the result of lot-to-lot variation, changes in production and machine modifications implemented by the manufacturer, service issues or any other reason beyond Buyers Lab's control. Test unit serial #: RRG9700031

About Keypoint Intelligence - Buyers Lab: Keypoint Intelligence is a one-stop shop for the digital imaging industry. With our unparalleled tools and unmatched depth of knowledge, we cut through the noise of data to offer clients the unbiased insights and responsive tools they need in those mission-critical moments that define their products and empower their sales.

For over 50 years, Buyers Lab has been the global document imaging industry's resource for unbiased and reliable information, test data, and competitive selling tools. What started out as a consumer-based publication about office equipment has become an all-encompassing industry resource. Buyers Lab evolves in tandem with the ever-changing landscape of document imaging solutions, constantly updating our methods, expanding our offerings, and tracking cutting-edge developments.

CERTIFICATE OF RELIABILITY

Awarded to the

KYOCERA TASKalfa 8003i



A handwritten signature in black ink, appearing to read "Randy Dazo".

RANDY DAZO, GROUP DIRECTOR,
OFFICE TECHNOLOGY & SERVICES

APRIL 2020

DATE

This is to certify that when subjected to a 450,000-impression Buyers Lab durability test, the KYOCERA TASKalfa 8003i proved to be a highly reliable product.

BUYERS LAB

THE LEADING INDEPENDENT OFFICE PRODUCTS TEST LAB AND BUSINESS CONSUMER ADVOCATE
NORTH AMERICA • EUROPE • ASIA • KEYPOINTINTELLIGENCE.COM

©2020 Keypoint Intelligence. Reproduced with permission.