



Lab Test Report

A Comprehensive Keypoint Intelligence Laboratory Evaluation

KYOCERA TASKalfa 9002i

90 PPM Monochrome
Print • Copy • Scan • Fax



● Reliability		10.0
● Apps/Onboard Tools		Not Rated
● Image Quality		7.5
	Print Quality	8.0
	Copy Quality	7.0
● Usability		7.0
	Serviceability/Management	7.0
	Walk-up Experience	7.0
	Workstation Experience	7.5
● Mobility		Not Rated
● Security		9.0
● Features		9.0
● Speed		6.0
	Print Speed	6.5
	Scan Speed	6.5
	Copy Speed	5.0
● Power Consumption		Not Rated



OUR TAKE

The KYOCERA TASKalfa 9002i performed extremely well in Buyers Lab's extensive lab test evaluation, proving to be a highly dependable product and a strong choice for midsize to large workgroups. The device did not experience any misfeeds over the course of its 450,000-impression durability assessment. Print quality was very effective thanks to clearly readable characters, bold solids, and an excellent halftone range with smooth fill. Class-leading job stream performance—a test that simulates real-world, multi-user usage—ensures the unit can more than handle the needs of general office demands. Smaller-than-average scan file sizes in both colour and black-and-white, plus the ability to create shortcuts in the scan and copy menus, provide an increase in uptime and worker efficiency. Standard WiFi-Direct and NFC and support for Apple AirPrint®, Google Cloud Print®, and Kyocera Mobile Print® let users quickly and easily print from mobile devices. The TASKalfa 9002i is also HyPAS-enabled, allowing for seamless integration of customized workflow solutions to streamline complex tasks, reduce costs, and enhance security. Standard encrypted secure print plus optional hard drive overwrite and encryption effectively defend sensitive documents and the device itself from unauthorised access. A low SRP and robust feature set solidify the unit's impressive value. Based on its performance, Buyers Lab highly recommends the KYOCERA TASKalfa 9002i for midsize to large workgroups.

KYOCERA TASKalfa 9002i Fast Facts*

SRP/Street Price	INA
Max Monthly Duty Cycle	450,000 impressions
Manufacturer's Recommended Monthly Volume	Info not avail
Rated Speed	90 ppm
Std Paper Source(s)	Dual drawer, dual tray
Std Paper Capacity	4,000 sheets
Paper Weights	60 to 256 gsm
Bypass/Paper Weights	150-sheet/60 to 300 gsm
Max Paper Capacity	7,650 sheets
System Memory (Std/Max)	4.5-GB RAM/8-GB RAM
Document Feeder/ Capacity	Std DSPF/270 orig
PDL/PCL	PCL 5/6, PostScript 3, XPS
HDD (Std/Max)	320 GB
Scanner Technology/Speed	CCD/120 ipm colour, 120 ipm black
* At time of publication	

Test Duration: Two months, including a 450,000-impression and 45,000-scan durability test.

The gauges above represent Excellent (9–10), Very Good (7–8.5), Good (4–6.5), Fair (1.5–3.5), and Poor (0–1).

Please visit buyerslab.com/bliQ for more information.

BENEFITS

Maximize uptime thanks to flawless reliability

Low price and above-average feature set make for an excellent value proposition

High quality printed output meets the needs of general office environments

Ensure unique settings are one click away via the driver's Quick Print tab, which enables users to create and save custom profiles as graphical icons

Streamline scan and copy workflows with shortcut keys and up to 50 job programs

Print from anywhere with mobile printing support for both Android and Apple devices

Take advantage of KYOCERA's HyPAS Platform to connect to specialized and embedded applications

Conveniently switch between PCL and PostScript for different job types from within the KX driver

ADVANTAGES

Small colour scan file sizes

Excellent halftone range and fill in print mode

Fast job stream print times ensure the device can excel in demanding work environments

Faster-than-average first-copy times from the document feeder

Faster-than-average speeds when outputting short-run simplex jobs

Above-average memory capacity allows for faster job processing

LIMITATIONS

Scan and copy previews do not support page deletion or onscreen editing

Unable to store extensions nor save domains as one-touch keys to the scan display

Scan to email and scan to USB do not support the creation of sub-folders more than three levels down

Only quantity can be modified for jobs in queue; interrupted jobs require manual intervention to resume

No digital signature for job tracking

Slower-than-average duplex speeds for long- and short-run jobs in print and copy modes

Below-average maximum paper capacity and hard drive storage compared to competitors

RELIABILITY

10

The KYOCERA TASKalfa 9002i ran through 450,000 impressions without a single misfeed.

Impressions Printed	450,000 impressions
Scanned Pages	45,000 scans
Misfeeds	0
Misfeed Rate	Not applicable
Service Calls	0

APPS/ONBOARD TOOLS

Not Rated

KYOCERA's HyPAS Platform

offers both Java-based and Web Services-based software development kits. According to KYOCERA, this approach provides a more open and flexible developer environment, which enables integration with systems that are already implemented in a customer's enterprise. DocuWare Connector serves as a bi-directional bridge between HyPAS-enabled and capable MFPs, and DocuWare on-premises and cloud-based enterprise content management systems.

AccuSender

powered by Biscom allows users to scan and send documents quickly to and from their KYOCERA MFP using Biscom Secure File Transfer, email, or fax. KYOCERA notes that the solution is well-suited for organizations operating in the legal, financial, healthcare, and government segments, as they often send large files and are subject to tight security and privacy regulations.

CentraQ and CentraQ Pro

enable businesses to control data and printing costs while enhancing worker productivity. Users can release print jobs from any compatible device on the network. The solutions also support QR code release functionality. The Pro edition of the solution also offers six detailed reports, including device usage, individual user usage, device ranking, and more.

DMConnect and DMConnect Pro

enhance the benefits of a document management system by transforming KYOCERA MFPs into on-ramps for routing documents into any folder in an organization's DMS, allowing users to store, retrieve, and share files quickly, easily, and securely. In testing it was easy for administrators to develop, deploy, and maintain workflows, and even easier for end-users to use the system for their capture and routing needs.

PinPoint Scan 3

allows for scanning from the MFP to a PC with added speed, functionality, and versatility. Users can scan to a series of preconfigured destinations after entering a PIN, and all data is encrypted to protect sensitive information. The application easily allows end-users to create their own PIN and personalized scan destinations. It also requires minimal involvement on the part of IT staff.

Teaching Assistant

enables automated creation, printing, and grading of multiple-choice exams using popular bubble-sheet forms right from supported MFPs, with no need for client PC or server software.

SharePoint Connector 4

allows users to access documents on the SharePoint server directly from the MFP's control panel. Square 9 Connector allows users to scan paper documents directly into existing Square 9 Global Search workflows.

IMAGE QUALITY

7.5

	Print Mode	Copy Mode
Text	Very Good	Good
Line Art	Very Good	Very Good
Halftone Pattern	Excellent	Very Good
Halftone Range	Excellent	Very Good
Solids	Very Good	Very Good

PRINT QUALITY

8.0

- Text is sharp and fully formed, but straight lines and curves are slightly jagged
- Slight breaks in solid lines, but overall are fine and consistent; circles are also fully formed
- Superbly smooth halftone pattern with no banding
- Solids were generally bold, but some mottling is evident and dark areas have some breakup

PRINT DENSITY

	Tested Device	Competitive Average
Black	1.33	1.38

Measurements are based on four reading corresponding to four different solid locations on the output. The higher the reading, the darker the image.



COPY QUALITY

7.0

Characters in text were jagged and lacked some sharpness, but all in all remained fully formed

Fine and consistent lines

Very good halftone range and fill, but some graininess is evident in patterns

Bold solids

COPY DENSITY

	Original	Tested Device	Competitive Average
Black	Info not avail	1.31	1.39

Measurements are based on two reading corresponding to two different solid locations on the output. The higher the reading, the darker the image.



USABILITY

7.0



SERVICEABILITY/MANAGEMENT

7.0

Drivers can be installed simultaneously with each other and the feedback utility, and no user intervention is required for the configuration of accessories.

The install utility also has built-in test-page printing, but drivers cannot be pushed out to multiple PCs during install.

KYOCERA Fleet Services (KFS) is a web-based service that streamlines remote fleet maintenance. The cloud-hosted solution enables administrators to view device status and easily identify and execute high-level maintenance tasks from anywhere, thus reducing service costs by circumventing on-site visits from technicians.

KYOCERA Net Viewer enables device discovery and management of Kyocera hardware on the network. Administrators can sort devices by name or IP address and specify which information is shown on monitored devices. KYOCERA Net Viewer also allows administrators to create groups of products based on reporting or error notification requirements. Within a "report group" an administrator can receive reports via e-mail outlining a variety of device statistics, including printed page volumes and consumables levels, at defined time intervals. While Net Viewer does not support remote access to the device's service mode, it does support remote firmware upgrades and remote driver installation.

KYOCERA Net Admin is a free server-based solution that gives network administrators and help-desk staff control of all network-enabled printers and MFPs. It installs in minutes and is particularly easy to navigate, with well-marked tabs and support for drag-and-drop actions. It allows users to remotely configure and automate the distribution of print drivers, monitor their status, manage individual or groups of devices, clone settings to like devices, and check on consumables levels. Optional plug-ins offer print queue management, print job reporting, and full-featured print accounting. KYOCERA Net Admin does not, however, support capture of copy meter data. In addition, there is no mechanism to limit end-user access to device capabilities. It does support scan or send meter data. Job history and status reports can be generated in HTML, PDF, or CSV formats and saved to the network via KYOCERA Net Admin, and they can be configured to run at set intervals and automatically e-mailed to a list of recipients.



Both length and width guides slide in sync when adjusting paper size in the drawers. In addition, stickers available on side-to-side guides are easy to read and break down different height limits from standard paper to envelope height. Plus, the soft close drawers make for no slamming of cassettes. (US model pictured)

Dynamic, step-by-step instructions are provided for clearing misfeeds (finisher pictured) and include text, graphics, and animation. All misfeed areas allow for easy access, and all user access handles are clearly marked blue.



The process for replacing toner is simple and clean. Only when the container is empty will the device notify the user to open the front panel and make the replacement, helping to prevent premature replacement of toner.

CONSUMABLE RATED YIELDS

USER- REPLACEABLE	Competitive Average	Tested Model
Black Toner	70,800.00	70,000.00
SERVICE- REPLACEABLE	Competitive Average	Tested Model
Black Developer*	887,500.00	600,000.00
Black Photoconductor	2,825,000.00	600,000.00

*Maintenance kit includes drum, developer, fuser, transfer unit, and paper feed

WALK-UP EXPERIENCE

7.0

The scan and copy menus can be customized by adding up to six shortcuts from other menus to the main menu for easier access. In addition, up to 50 scan jobs can be saved as job programs within the scan menu or even on the Home screen to streamline workflow of commonly run jobs.

Scan and Copy previews allow users to enlarge the view and move images around, but do not support page deletion or onscreen editing.

Dynamic help is provided; users simply click on the “?” icon that appears onscreen after a function is selected.

Highly intuitive to set up scanning to a network folder, plus network browsing for easy programming, standard scan to OCR, and searchable PDF. Plus, many available apps support OCR, including DM Connect Pro powered by Nuance®, Exchange Connector, and PinPoint Scan 3.

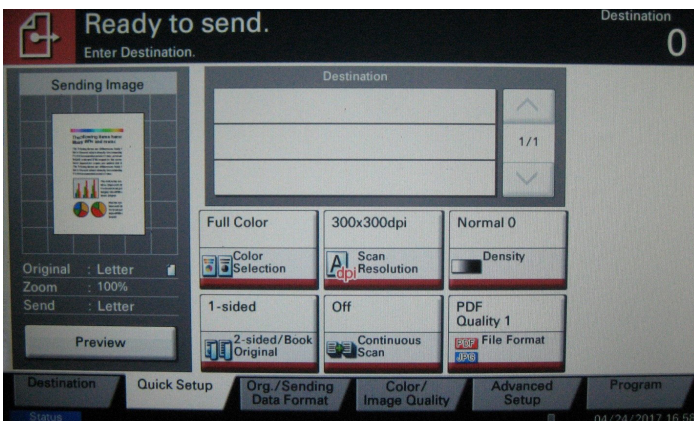
Up to four LDAP servers are supported and destination addresses entered manually at the control panel can be added to the device-resident address book on the fly by end-users.

USB menus auto-populate when a USB device is inserted into the port, whereas some other systems require users to navigate through several menus to locate USB capabilities.

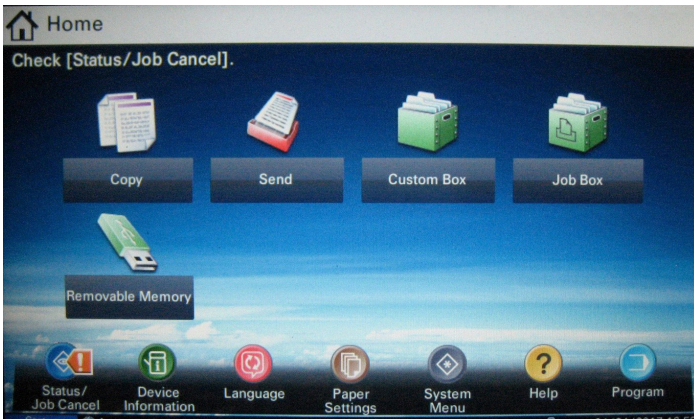
Scan to USB does not support the creation of sub-folders more than three levels down, meaning if a user has sub-folders on their USB below three levels, they cannot access that folder.

Print from USB does not support the navigation of subfolders more than three levels deep, meaning if a document or image is three subfolders deep in the USB storage device, it cannot be accessed or printed from the 9002i

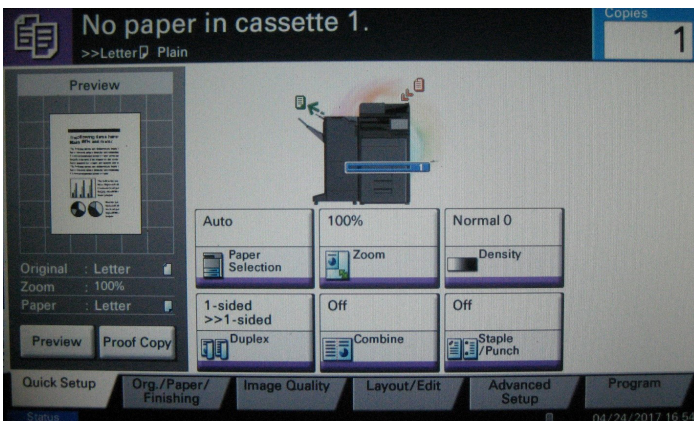
Scan preview is not available when scanning to USB



All commonly used scan features are programmable from the same screen, including colour mode, resolution, format, compact PDF, duplex, and preview, helping to maximize efficiency. Plus, multiple destinations are supported in one session.



Up to 50 scan jobs can be saved as job programs within the scan menu or even on the Home screen to streamline workflow of commonly run jobs.



Most of the selections for a typical copy job can be accessed from the Quick Setup tab, including duplex, paper source, colour mode, reduction/enlargement, and finishing. The control panel can also be angled in multiple positions. Each user can also customize the location of each key on the main page, add settings to the main screen, and select their default home screen and language.



WORKSTATION EXPERIENCE

7.5

Streamline complex workflows via the Quick Print tab.

Easily switch between PCL and PostScript drivers for different job types, whereas competitors typically require users to go through Printer Properties in order to switch between drivers.

Direct print capabilities are robust and include support for PDF, JPEG, TIFF, DOC, XLS, and PPT formats, as well as the ability to output multiple jobs and sets, change quantity, change simplex/duplex, select paper size and source, apply corner stapling, and create profiles.

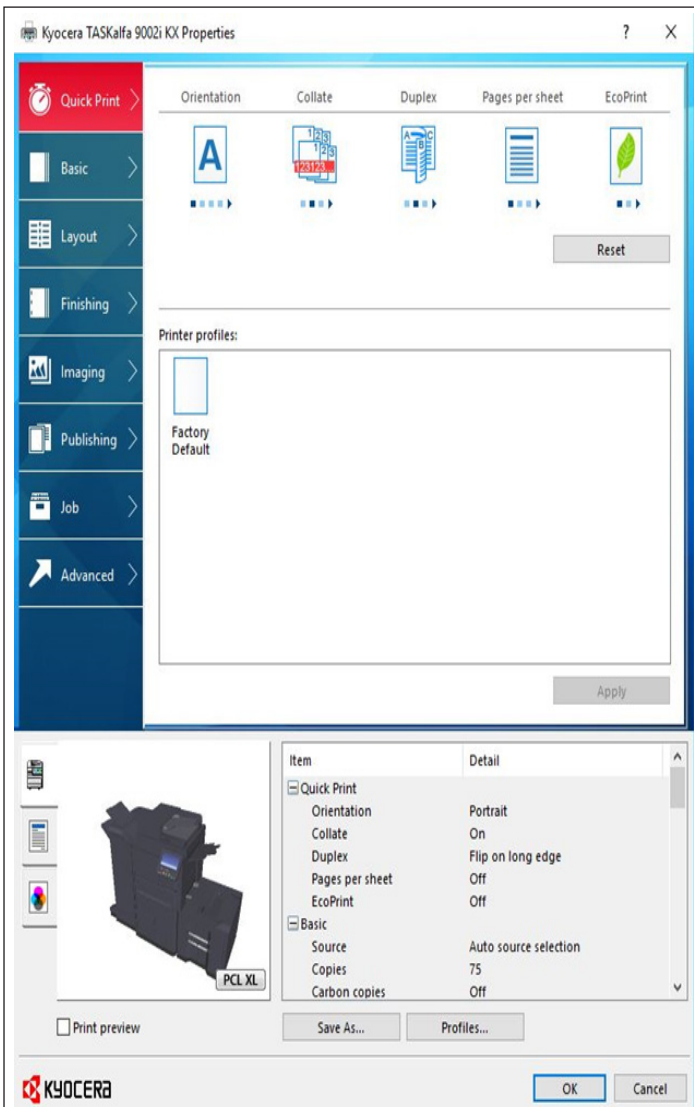
Secure print procedures are intuitive, and username and filename can be changed via the Custom Name function; however, any user can delete a secure print job.

Highly detailed consumables status and highly customizable email alerts are supported from the embedded web server, plus print job completion and deletion notifications.

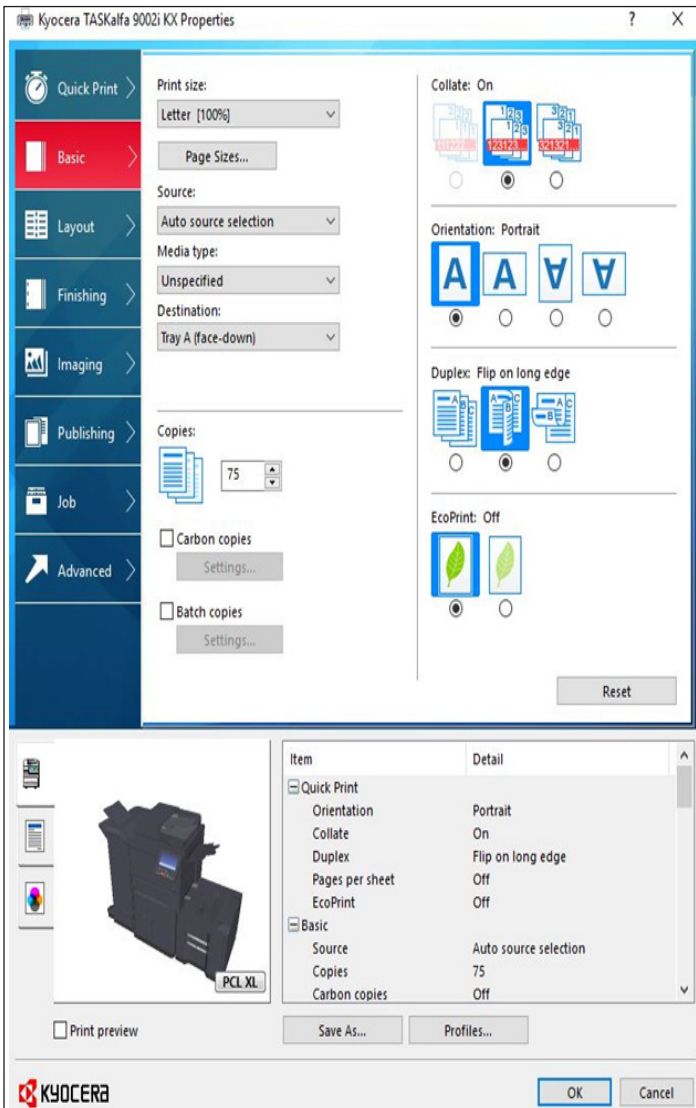
The driver includes Eco Print (reduces the amount of toner used) and Print Preview (provides on-screen preview of every page of the job, along with the ability to zoom in and cancel the job). However, no changes can be made to the document from the preview function.

Any driver settings that are not compatible are greyed out and not selectable, whereas some competitors allow users to scroll over the greyed out settings with their mouse and receive a pop up on how to get the setting to work.

The Batch Copies feature separates copies of a print job into different batches by enabling the user to select the number of copies in each batch. Users can name each batch printing job and save its settings for future use. A storage device must be installed or RAM disk enabled in order for this feature to be used.



While an entire tab of the driver cannot be customized, users can save custom profiles that are stored as graphical icons via the Quick Print tab to allow programming of complex jobs in one click. Users can click on the Save As button on any of the tabs to save currently selected settings, name the new profile, and add a description for storage on the Quick Print tab.



Most typical print job settings are selectable from the Basic tab, including paper type and source, duplex, EcoPrint On/Off, quantity, and collate sets, although finishing selections such as stapling are programmable from the Finishing tab.

MOBILITY

Not Rated

The device provides standard WiFi-Direct and NFC support for Android mobile devices. Mobile printing is also supported via Apple AirPrint, Google Cloud Print, and Kyocera Mobile Print.

SECURITY

9.0

Standard secure print, encrypted secure print, encrypted scanning, and encrypted USB scanning

Optional hard drive overwrite and encryption

Optional ID card authentication

Administrators can limit or restrict access to colour printing, the control panel, and the USB port

SECURITY FEATURES

AUTHENTICATION	
Network user authentication at control panel	Standard
Windows	Yes
Novell NetWare NDPS	INA
LDAP	Yes
Kerberos	Yes
802.1x wireless	Yes
SMTP	Yes
POP before SMTP	Yes
Biometric	No
ID Card	Optional
HID	Yes
Common Access	Yes
Other	Equitrac, SCM, RFIDEAS, ELATEC
Registered department or user ID codes	Standard
Number	1000
ACCESS CONTROL	
Restrict colour	N/A
Control panel lock/disablement	Standard
Restrict access to address book	Standard
Restrict USB port	Standard
Restrict direct printing	Standard
Restrict other	Any function using User ID (Print Restriction totals, scan)
HARD DRIVE	
Encryption	Optional
Maximum level	256 - bit AES
Overwrite	Optional
Method	Customer can choose One-Time Overwrite-Erase or The US Dept. of Defense DoD 5220.22-M (Three Passes)
Maximum number after a job	3 times
Maximum number at end of lease	3 times
Lock	No
Removable	No
Password-protected mailboxes	Standard
Data auto-deletion in mailboxes	Standard
JOB TRACKING	
Job logs	Standard
Digital signature	No
Verify document came from device	N/A
Verify document came from specific user	N/A

JOB PROTECTION	
Encrypted secure print	Standard
Secure print	Standard
Encrypted scanning	Standard
Maximum level	AES 128 bit
For scan to USB	Yes
Unauthorised scan/copy protection block (watermark)	Optional
Compatible with same-brand devices	Yes
Compatible with third-party devices	No
NETWORK SECURITY/PROTOCOLS	
Protocol disablement	Standard
Port disablement	Standard
IP address filtering	Standard
MAC address filtering	No
HTTPS	Standard
Self-signed certificate	Yes
Certificate signing request	Yes
IPsec	Standard
IPv6	Standard
Secure Sockets Layer (SSL)	Standard
S/MIME encryption	INA
SNMPv3 support	Standard
Transport Layer Security (TLS)	Standard
Trusted Platform Module (TPM)	INA
CERTIFICATIONS	
Common Criteria	Yes*
EAL level	EAL 3
Capabilities certified	Based on IEEE2600.1
FIPS 140-2	Yes*
Level	INA
IEEE 2600	Yes*
OTHER	
Administrator password length	up to 64 digits
Password-protected web server	Yes
Additional features	
Third-party features	

* with Data Security Kit (E)

INA: The vendor declined to provide this information

N/A: Not applicable

FEATURES

9.0

Higher-than-average memory allows for faster processing of jobs

Heavy paper weight support increases media flexibility

Paper handling options include a dual 500-sheet paper drawer, a dual 1,500-sheet paper drawer, and a 3,000-sheet side large capacity tray (8.5" x 11"/A4). An optional 4,000-sheet finisher allows for more complex jobs and can be configured with an optional hole punch unit, optional 7-bin mailbox (100 sheets per bin), and optional booklet/tri-fold unit.

Below-average maximum paper capacity means users may need to refill paper more often.

SPEED

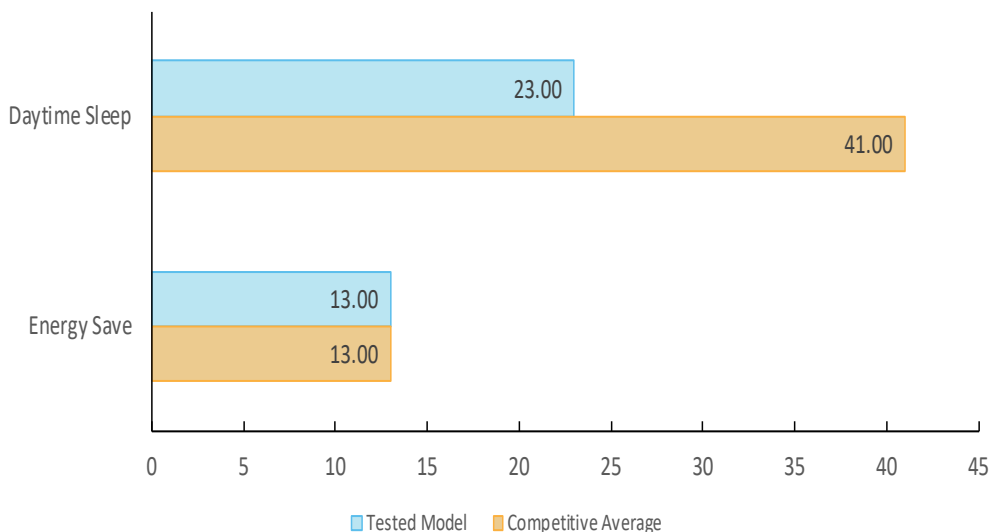
6.0

PRINT SPEED

6.0

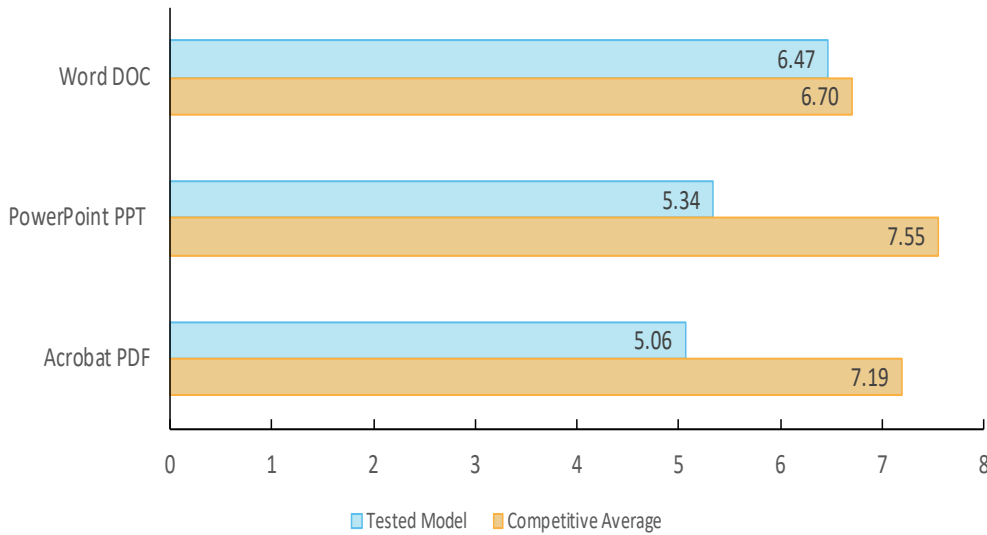
The unit performed well against competitors of the same rated speed. The TASKalfa 9002i demonstrated fast output times for PowerPoint and PDF files, plus faster-than-average first-print times from daytime sleep mode. Faster-than-average times when testing the job stream should suit the device well in multi-user environments. Duplex speeds for short- and long-run jobs were slower than average, however.

Recovery Times (in Seconds)



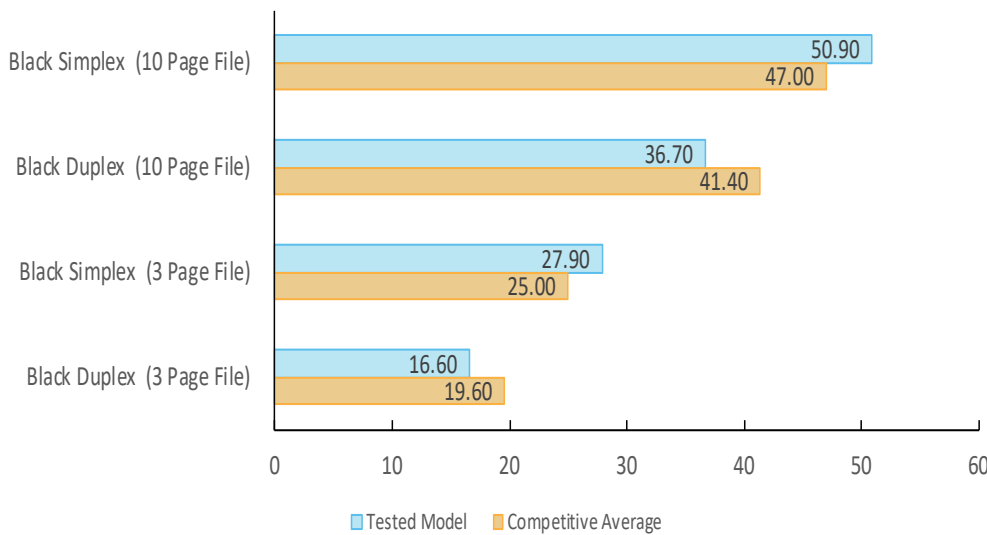
Recovery time in seconds indicates the time it took to warm up, process the image, and deliver a single-page test document to the output tray. The unit was tested with the PCL driver.

First-Page Print Time From Ready Mode by File Type (in Seconds)



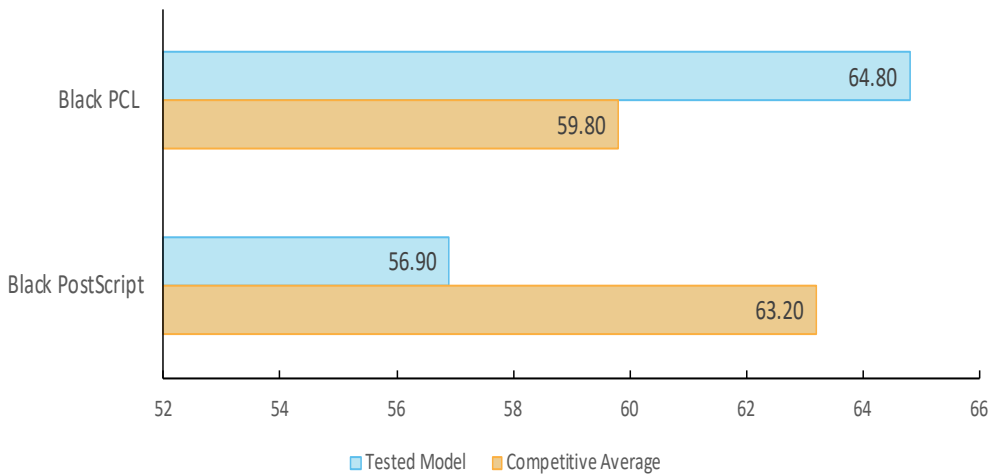
First-print time indicates the time it took to process the image and deliver a single-page test document to the output tray. The unit was tested using the PCL driver.

First-Set Print Speed (Single Set; in PPM)



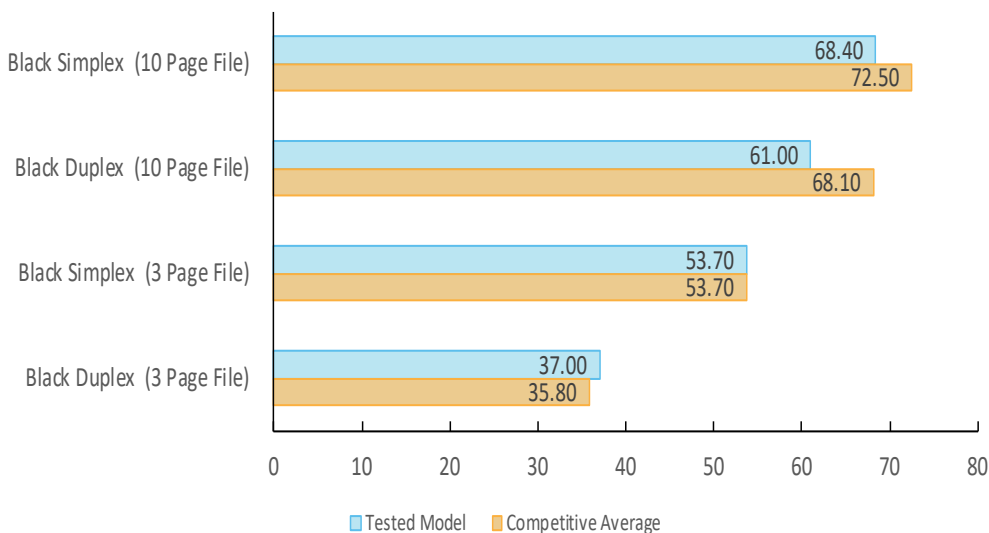
Single-set speed is tested using a Buyers Lab’s proprietary 3-page and a 10-page testing document. The unit was tested using the PCL driver.

Job Stream Test



Buyers Lab's job stream includes Word documents, Outlook email messages, Excel spreadsheets, PowerPoint presentations, and HTML and Acrobat PDF files, totalling 19 pages. This test simulates the type of traffic a typical device might experience in a real-world, multi-user environment. All the files are sent to the device as a group, at which time the stopwatch begins; timing ends when the last page of the last file exits the device.

Average Print Speed (Multi-Set; in PPM)



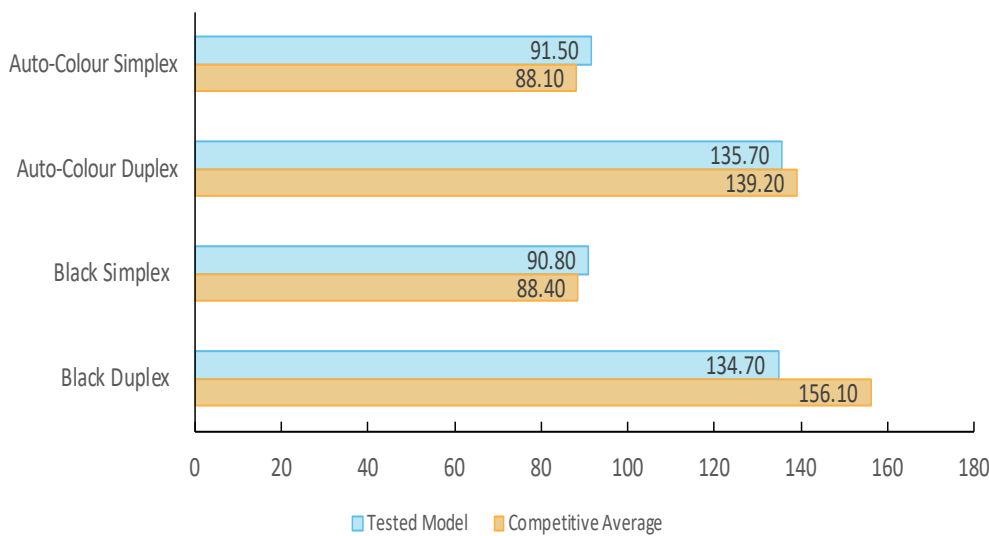
Speed is tested using Buyers Lab's proprietary 3-page and 10-page testing document. Buyers Lab obtains the overall speed by averaging the tested speed for each run length (1, 5, 10, and 20 sets). The unit was tested using the PCL driver.

SCAN SPEED

6.5

The TASKalfa 9002i's scan speeds were generally in line with the speeds of competing models, except for black duplex speeds being slower than average. On the other hand, full colour file size was nearly half the size of the competitive average when best compressed. No compression exists in black-and-white mode, but scan file size is still smaller than the average of other non-compressed files.

Scan Speed (in IPM)



Testing is conducted with a 10-page file scanned in default mode at 300 dpi in PDF format.

SCAN FILE SIZE (IN KB)

	Tested Model	Competitive Average
Auto-Colour (Default Compression)	575	967.32
Auto-Colour (Best Compression)	141	269.82
Black (Default Compression)	124	188.5
Black (Best Compression)	NA	37.36

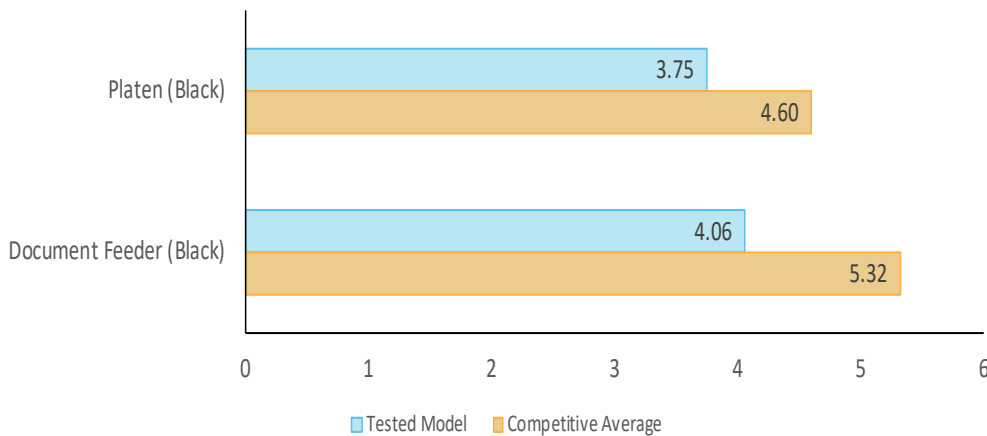
Testing is conducted with single-page files scanned at 300 dpi in PDF format.

COPY SPEED

5.0

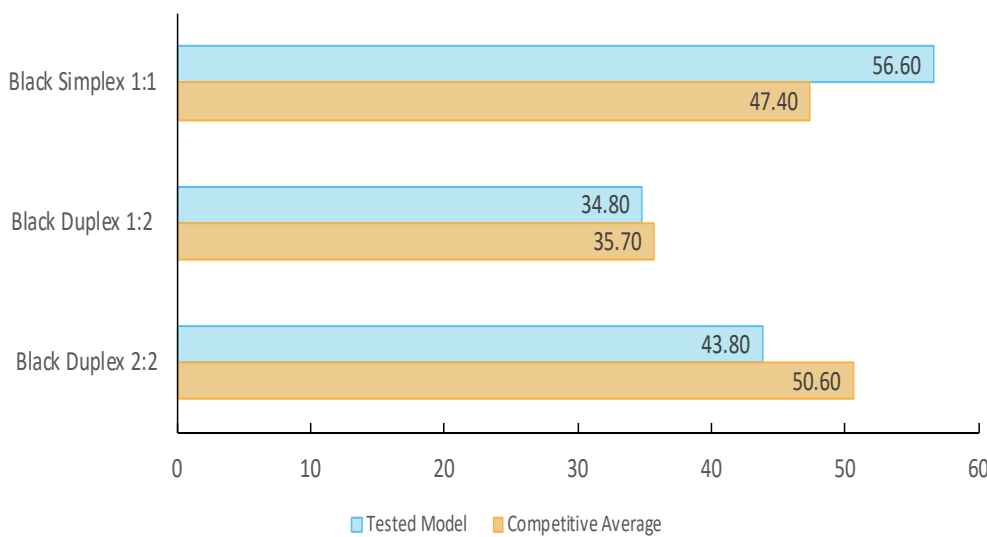
Copy speeds were also largely competitive. Short-run simplex speed was the fastest among the group, with first copy times from both the platen glass and the document feeder also clocking in faster than average. Duplex speeds when testing short- and long-run jobs were slower than average.

First-Copy Times (in Seconds)



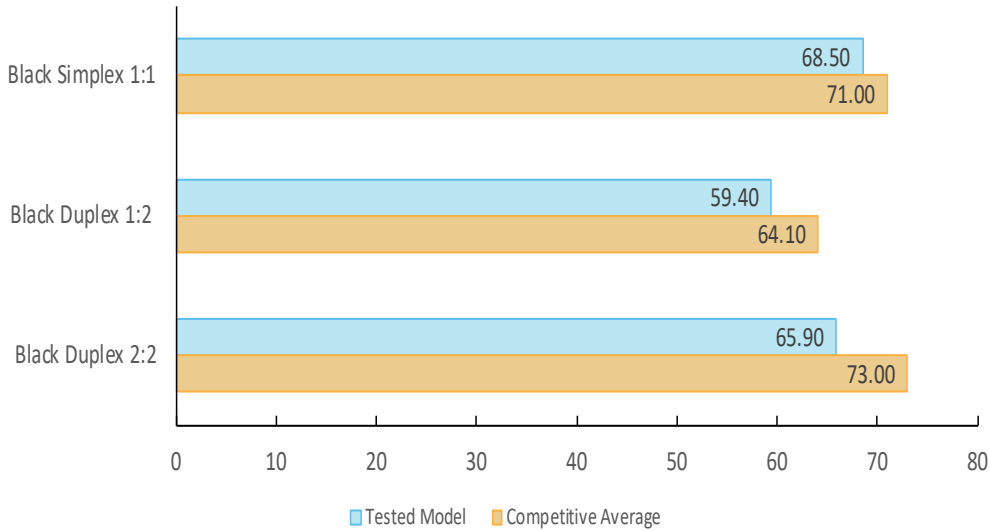
First-copy time is measured as the time it takes for a single copy to completely exit the device when a copy is made from an original placed in the document feeder and on the platen.

Copy Speed (Single-Set; in CPM)



Single-set copy speed is tested using Buyers Lab's proprietary 10-page testing document. Timing begins as the start button is pressed, pages are scanned through the document feeder and timing ends when the last page of a single-set of the document exits the device.

Average Copy Speed (Multi-Set; in CPM)



Copy speed is tested using Buyers Lab’s proprietary 10-page testing document. Buyers Lab obtains the overall speed by averaging the tested speed for each run length (1, 5, 10, and 20 sets).



POWER CONSUMPTION

Not Rated

PROJECTED ANNUAL ENERGY CONSUMPTION (IN KWH)

Total Annual Energy Consumed	228.6288
Competitive Average	277.0996

Calculations based on printing Buyers Lab’s job stream test suite over a four-hour period, with the machine set to go into its energy-save and/or sleep modes at the shortest intervals possible. Total yearly energy consumption is calculated based on the total energy used during a typical workday, plus overnight and weekend sleep energy. Total number of pages run is based on a Buyers Lab survey of average monthly volumes by speed range.

Pages Printed: 1,134 total - 6 jobs of 189 pages each
Test Documents Used: DOC, XLS, PPT, HTML, PDF, Outlook email messages
Output Modes: 50% simplex, 50% duplex

ENVIRONMENTAL FEATURES

Specified capable of running recycled paper (30%/50%/100% post-consumer content)	Yes
Instant/Quick Fusing	Yes
Duplexing	Yes
Toner-save mode	Yes
RoHS compliant	Yes
Toner cartridge recycling program for this product	Yes
Ability to program features such as duplexing and auto shut-off over entire fleet	Yes
What tool can be used to do this?	INA

Eco-Label Certifications

ENERGY STAR	Yes
Other	ECMA-370/The Eco; EPEAT level pending

INA: The vendor declined to provide this information
 NA: Not applicable

SUPPORTING TEST DATA

Test Environment: This product was tested in Buyers Lab's environmentally controlled US test lab, which replicates typical office conditions.

Test Equipment: Buyers Lab's dedicated test network, consisting of Windows 2008 and Microsoft Exchange servers, Windows 7 workstations, 10/100/1000BaseTX network switches and CAT6 cabling.

Test Duration: A single product is tested for two months, five weeks of which consists of a durability test during which the product is run at its manufacturer-rated maximum monthly duty cycle, with 25 percent of the test volume comprised of copy jobs and 75 percent comprised of print jobs. Buyers Lab's daily test usage is designed to replicate real-world use over an eight-hour workday, and as such includes a mix of various-size documents, simplex and duplex modes, and a mix of short, moderate and long run lengths, and on/off cycles, throughout the day. The durability evaluation also includes testing of the document feeder/scanner in simplex and duplex modes for an additional 10 percent of the monthly maximum volume, evenly divided over the course of the test.

Tested Configuration: KYOCERA TASKalfa 9002i base unit (US), plus 4,000-sheet finisher (no booklet) and a large-capacity side feeder (500, 1,500-sheet x 2).

Test Procedures: Buyers Lab's lab testing includes both Buyers Lab proprietary and industry-standard test procedures and documents. In addition to a visual image quality evaluation, optical density of primary color (CMYK) solid fill output is measured using a densitometer, and color gamut and consistency are evaluated using a color spectrophotometer. The reliability test is conducted using Georgia Pacific and Boise paper in the US, and UPM, Data Copy and Mondi paper in the UK. In both labs, 30 percent of the paper is recycled. The media used for image quality testing is Georgia Pacific Printing Paper (24 lb., 96 brightness) in the US and UPM Future ImageTech 100 gsm in the UK.

Competitive Group: The analysis in this report compares the tested device to a group of all other currently available like models (e.g., color vs. color, copier-based vs. copier-based) in the same speed range (5 ppm up and down from the speed of the tested device) with support for the same media size. For test performance categories, the results are compared with those of currently available tested models in the group, whereas for feature set and pricing, the comparison is made against all currently available models in the group, whether tested or not. The pricing analysis is for devices comparably configured with accessories and the most common options.

Note: This report is based on Buyers Lab testing one representative test sample at a specific point in time. Buyers Lab is not responsible for differences in performance that may be the result of lot-to-lot variation, changes in production and machine modifications implemented by the manufacturer, service issues or any other reason beyond Buyers Lab control. Test unit serial #: ZD47Y00005.

About Keypoint Intelligence - Buyers Lab: Buyers Lab (BLI) is the world's leading independent provider of analytical information and testing services to the document management industry. For over 50 years, buyers have relied on Buyers Lab to help them differentiate products' strengths and weaknesses and make the best purchasing decisions, while industry sales, marketing and product professionals have turned to Buyers Lab for insightful competitive intelligence and valued guidance on product development, competitive positioning and sales channel and marketing support. Buyers Lab also offers private, for-hire testing services that help manufacturers develop and market better products and consumables.

KEYPOINT INTELLIGENCE - BUYERS LAB • NORTH AMERICA • EUROPE • ASIA

Gerry Stoia, CEO

Deanna Flanick, CRO

Patrick Albus, CFO

Jeff Hayes

Managing Director
Jeff.Hayes@keypointintelligence.com

Randy Dazo

Director, Office Technology & Services Group
Randy.Dazo@keypointintelligence.com

Jamie Bsales

Director, Software Analysis
Jamie.Bsales@keypointintelligence.com

George Mikolay

Associate Director, Copiers/Production
George.Mikolay@keypointintelligence.com

Marlene Orr

Director, Printer & MFP Analysis
Marlene.Orr@keypointintelligence.com

Carl Schell

Managing Editor
Carl.Schell@keypointintelligence.com

U.S. ANALYSTS 

Kris Alvarez

Editor
Kris.Alvarez@keypointintelligence.com

Felicia Heiney

Editor
Felicia.Heiney@keypointintelligence.com

Lee Davis

Editor, Scanners/Software Evaluation
Lee.Davis@keypointintelligence.com

Kaitlin Shaw

Editor, Printer & MFP Evaluation
Kaitlin.Shaw@keypointintelligence.com

EUROPEAN ANALYSTS 

Priya Gohil

Senior Editor
Priya.Gohil@keypointintelligence.com

Simon Plumtree

Senior Editor
Simon.Plumtree@keypointintelligence.com

Andrew Unsworth

Editor
Andrew.Unsworth@keypointintelligence.com

LABORATORY 

Pete Emory

Director, U.S./Asia Research & Lab Services

David Sweetnam

Director, EMEA/Asia Research & Lab Services

COMMERCIAL

Mike Fergus

Vice President of Marketing & Product Development

Gerry O'Rourke

International Commercial Director

CERTIFICATE OF RELIABILITY

Awarded to

KYOCERA Document Solutions Inc.

for the performance of the

KYOCERA TASKalfa 9002i

in Buyers Lab's in-house durability test



A handwritten signature in black ink, appearing to read "Gerry Stoia".

GERRY STOIA, CEO

APRIL 2018

DATE

This is to certify that when subjected to a 450,000-impression and 45,000-scan Buyers Lab durability test, the KYOCERA TASKalfa 9002i proved to be a highly reliable product.

BUYERS LABORATORY

THE LEADING INDEPENDENT OFFICE PRODUCTS TEST LAB AND BUSINESS CONSUMER ADVOCATE

NORTH AMERICA • EUROPE • ASIA • KEYPOINTINTELLIGENCE.COM

©2018 Keypoint Intelligence. Reproduced with permission.