

# Move forward to the next stage with Kyocera's cloud print solution

**Kyocera Cloud Print and Scan**



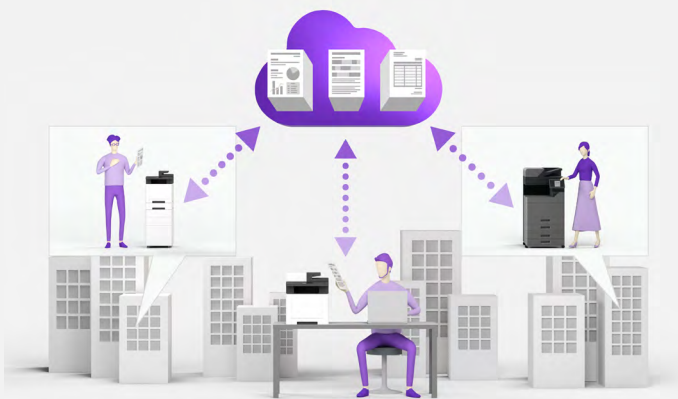
# Kyocera Cloud Print and Scan

Manage the costs of your print environment and ensure the security of your documents from the Cloud.

Kyocera Cloud Print and Scan improves the visibility of print-related costs on Kyocera devices, and is aimed at companies striving to easily install and configure a print management solution, without adding the disadvantages of server related costs.

## Print and Scan Anytime Anywhere

With registered device on Cloud or with the use of KYOCERA Mobile Print\*, you can print at anytime, anywhere with your PC and mobile.



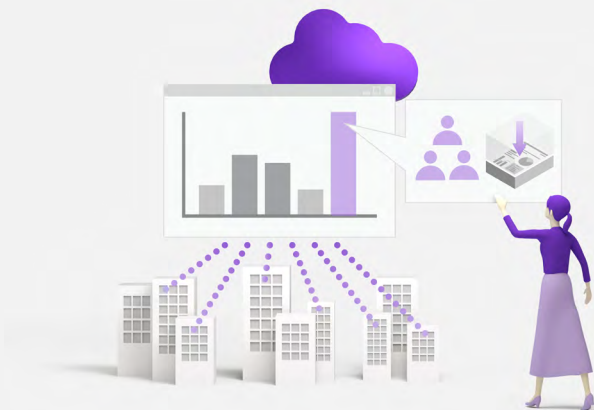
## Security Management

Authentication is needed to release the document from MFP that can reduce the risk of unattendance printout.



## Easy Print Management

Company can apply print management policy, control printing tasks and analyses the cost effectiveness with report.



## Low-cost, easy implementation with no management required

Eliminates the needs to implement and manage IT infrastructure.



\*Free application for smart devices



## Benefits for Cloud Solution:

### Cost Saving / Pay-as-you-use

By using Kyocera Cloud Print and Scan, you are only paying for the Service (SaaS), and no other initial investment is needed.

### Improved Productivity

Kyocera Cloud Print and Scan is a cloud-based printing / scanning application, employee can easily print and scan from the cloud anytime, anywhere.

### Secure Protection

Using the Client Spooling function, the print job can stay within the customer network and can be released from any device – only the metadata will be stored in the Cloud (AWS).

### Worry-free Maintenance

No need to maintain the hardware and software for this service.

## Key Features



### 3<sup>rd</sup> Party Cloud Storage Integration

Print from or scan to connected 3rd party cloud storage: OneDrive™, Google Drive™, and Box™.



### Entra ID (Formlery Auzre AD) and Google Workplace Authentication

User can use the Entra ID and Google Workplace Authentication to securely authenticate KCPS users



### Scan to Me

Scanned documents will be securely sent to dedicated user only that can prevent the possibility of data leakage.



### Security

Job release only after user authentication by user ID, card access or PIN code.



### FAX Forwarding

Can check FAX which is received on MFP in the office by reference to 3rd party cloud storage in the mobile anytime, anywhere.



### Unlimited Size Storage

KCPS allows user to store unlimited size of scanned documents with a certain period of time that can easily be retrieved and accessed.

# Specification

**Client Operating System:**

- + Windows 10, 11
- + MacOS 10.15, 11-14 (\*M1 chip is not supported)

**Browser Support:**

- + Google Chrome
- + Microsoft Edge (Chromium)
- + Safari

**Chrome Extension:**

- + Support Environment:  
Only Chromebook
- Chrome OS: latest version

**Device Compatibility:**

- + Kyocera compatible HyPAS MFPs\*

**3<sup>rd</sup> Party Cloud Storage Support:**

- + Google Drive™ / Google Drive for google workplace
- + OneDrive™  
OneDrive for business
- + Box™  
Box Enterprise / Enterprise plus  
Box Business / Business plus
- + Share Point Online

\*More information about compatible devices on [www.kyoceradocumentsolutions.asia](http://www.kyoceradocumentsolutions.asia)

Check out our website for more information about  
[Kyocera Cloud Print and Scan](http://www.kyoceradocumentsolutions.asia)



## KYOCERA Document Solutions Asia Limited

13/F, Mita Centre, 552-566 Castle Peak Road,  
Tsuen Wan, N.T., Hong Kong  
Tel : +852-2496-5678 / Fax: +852-2610-2063



[www.kyoceradocumentsolutions.asia](http://www.kyoceradocumentsolutions.asia)