



Document Solutions

> PRINT > COPY > SCAN > FAX

TASKalfa 2552ci
TASKalfa 3252ci
TASKalfa 4052ci
TASKalfa 5052ci
TASKalfa 6052ci

COLOR MULTIFUNCTION
PRODUCT
FOR A4/A3 FORMAT

OPTIMIZED WORKFLOW WITH SUPERIOR QUALITY



KYOCERA MyPanel

Mobile Print



PinPoint Scan

Teaching Assistant

Cloud Connect



When looking for a highly flexible MFP with equally high-quality and vibrant color, look no further than the new range of KYOCERA color MFPs. Advanced technology ensures perfect document management and production regardless of whether you are printing, copying or scanning. The high-quality flexibility continues with its wide range of paper-handling and modular finishing options, so rest assured this latest multifunctional device will handle all of your office document requirements time and time again.

- > High image quality with real 1,200dpi printing resolution
- > Fast first copy time (mono: 3.4 seconds; color: 4.4 seconds)
- > Warm-up time 17 seconds or less*
- > 320GB hard disk capacity**
- > 4GB RAM to meet heavy duty tasks without additional hard drive
- > Support A6 original scanning from Document Processor
- > Support Banner Print and Scan
- > Semi auto self-closing paper cassette

* For TASKalfa 6052ci

** Optional for TASKalfa 2552ci / TASKalfa 3252ci





Born to be Extraordinary

KYOCERA Document Solutions is Extraordinary for

- Broad Range of Multifunction Devices and Printers
- Optimized Total Cost of Ownership (TCO)
- Reliable with Long Life Drum and Parts
- New and Advanced Technology

KYOCERA Document Solutions strives to be a company that contributes to the society and demonstrates "Customer First" principle by providing customers with maximum value to increase their satisfaction. By adhering to the mission of producing document management devices that take balance between "Economy" and "Ecology", KYOCERA Document Solutions succeeds to develop document management devices with advanced technologies which help customers to optimize office productivity and efficiency at a low total cost of ownership and, at the same time, improving environmental performance.

Simplify Business Routine

These models redefine color multifunction system by incorporating flexibility and integrated business applications to fulfill document imaging needs and complex color projects requirements with ease.

Delivering professional A4/A3 image quality with ultra-reliability, these color multifunction products would increase productivity no matter how workflows are organized.

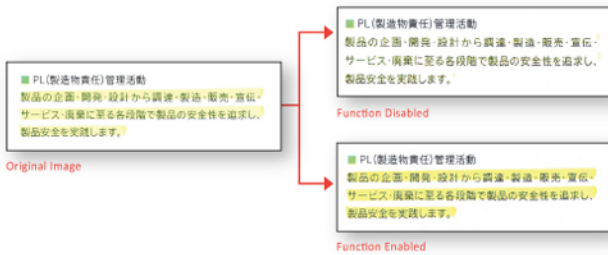
Handle Heavy Workload Perfectly





Powerful Functionality in COPY/PRINT/SCAN/FAX

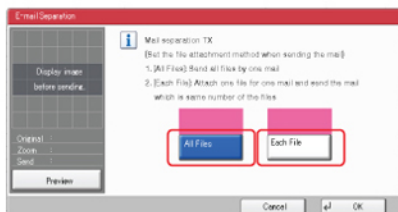
- **Test Copy:** Reduce miscopy when copying large volume by using the Test Copy mode.
- **Duplex Preview:** Display both front and back sides before printing (Copy/Box Print function).
- **Skip Blank Page:** Blank page is skipped during making scans/copies to save unnecessary cost.
- **Dedicated Preset Copy Mode for Special Original Media:** Newspaper Copy, Technical Drawing Copy, ID Copy, Highlighter Copy (reproduce fluorescent colors clearly).



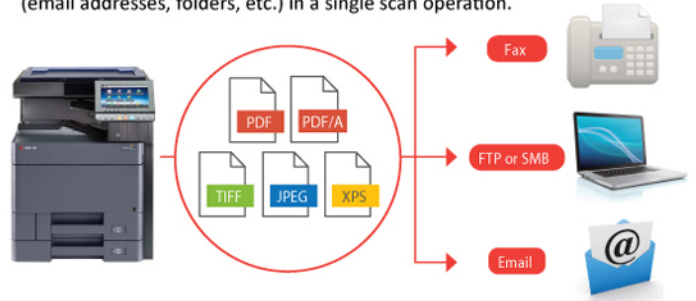
- **Prevent Bleed-thru:** Remove unwanted background when copying or scanning printed double-sized thin paper (e.g. newspaper, NCR paper, and magazine).
- **Carbon Copy:** Print an additional copy or copies of a document from a different media source or using a different media type.
- **Banner Send & Print:** Scan and produce banner with various paper weight in-house anytime in need (One-sided only).



- **Customize Scan Split:** Scan by split at specified page and allow send all scan files via one email or send files separately by emails.



- **USB Scan to/Direct Print:** Scan to or print directly from USB Memory in PDF, PDF/A, TIFF, JPEG or XPS format.
- **Scanned Image File Size Check:** Check the actual scanned document size does not exceed limit before actual sending to e-mail.
- **FTP/SMB/Email/Fax Multi-Sending:** Send document to different destinations (email addresses, folders, etc.) in a single scan operation.



- **Simple Fax Forwarding:** Forward any incoming fax to other destinations by Email, SMB or FTP (Optional).



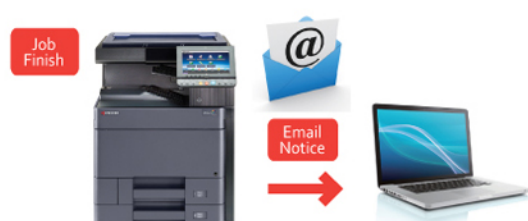
- **i-FAX Sending (Optional):** Send and receive i-FAX without the mail service by installing Direct SMTP function.

- **Job Skip:** Automatically prioritize the error print job to avoid machine come to a halt in case of

1. Paper empty in specific tray
2. Mismatched paper size
3. Mismatched media type

Received Order Order of Received JOBS				JOB Execution Order Order of Printed JOBS			
Sequence	Job	Paper Size	Status	Sequence	Job	Paper Size	Status
1	0001	A3	NG	1	0002	A4	OK
2	0002	A4	OK	2	0004	A4	OK
3	0003	A5	NG	3	0001	A3	NG
4	0004	A4	OK	4	0003	A5	NG

- **Job Finish Notice:** Send email notification to specified user when a copy/scan job is completed.





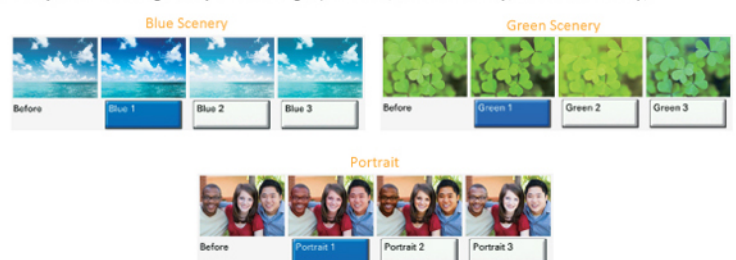
Remarkable Features for Easy Operations

- **Intuitive navigation:** Excellent clarity 9 inch color touch panel display with swivel type operability similar to smart phone and tablet and tiltable from 15 degree to 90 degree.
- **Convenience to use Keypad:** With on-screen virtual numeric keypad (hardware keypad is optional), users can type in with ease.
- **Home Screen:** All commonly used functions and applications are found on default Home Screen. The Home Screen can be customized easily to meet different use (or Group User) needs for immediate access to commonly used functions.
- **Printer Driver's Quick Print Tab:** Create and save frequently used custom profiles as graphic icons to allow programming of complex jobs in one click.
- **Custom Box:** Ease-of-use Custom Box provides long term job storage at device, allowing users to securely print and store jobs on the device and output them when required.
- **Semi auto self-closing cassettes:** Cassettes auto drawing within 40mm.



Optimized Quality

- Powerful color performance
 - Vibrant color with 1,200 x 1,200 dpi print resolution with same engine speed.
 - Adopt dual components developing method to produce superior image and color quality[#].
 - Contrast selection with copy/scan.
 - Multiple Image Adjustment Tools for optimal output:
 - **Color Optimizer at KYOCERA KX Driver:** Allow users to adjust the pixels near the color value or color space of defined areas instead of the entire image by selecting 2 from 3 parameters (Hue, Light, Saturation) and add up to 10 colors in each adjustment settings.
 - **One-Touch Color Image Adjustment:** Total 9 photo adjustment modes to select optimal settings for photo image (Portrait; Blue Scenery; Green Scenery; Vivid; Soft; Sharp; Smooth; Light; Heavy).
 - **Print Gray with Black Toner:** Improve text recognition and decreases color shadowing to reproduce accurate grayscale image.

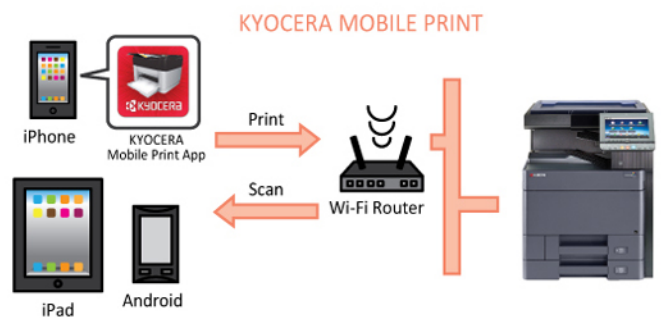


[#]For TASKalfa 2552ci and 3252ci

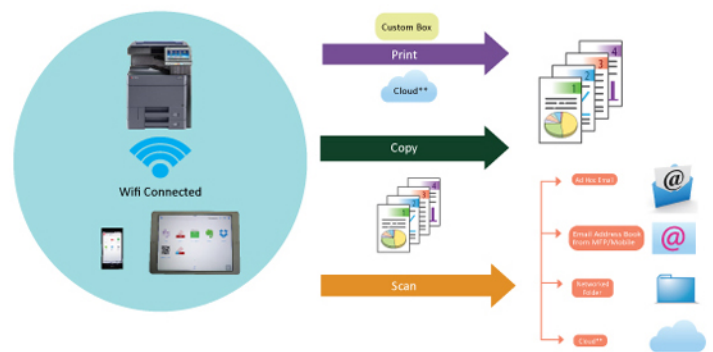


Empower workforce with KYOCERA Mobile & Cloud Solutions

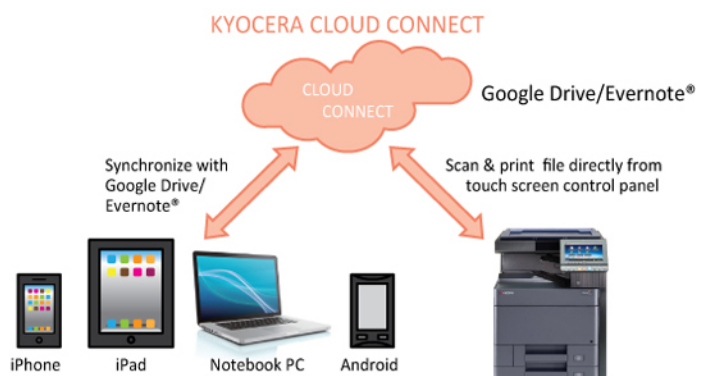
- KYOCERA Mobile Print:** An app-based solution that enables users to simply and conveniently print documents, web pages, and images on demand from virtually anywhere, on their Apple and Android smartphone and tablet devices to select KYOCERA MFPs and printers. Users can also scan files and images from same MFPs to their mobile devices. Our devices also support AirPrint for iPhone and iPad.



- KYOCERA MyPanel:** Use smartphone or tablet to connect a compatible networked KYOCERA printing device on your local Wi-Fi network wirelessly. Users can perform COPY/PRINT/SCAN from Custom Box or Cloud^{##} by mobile devices with personalize settings.



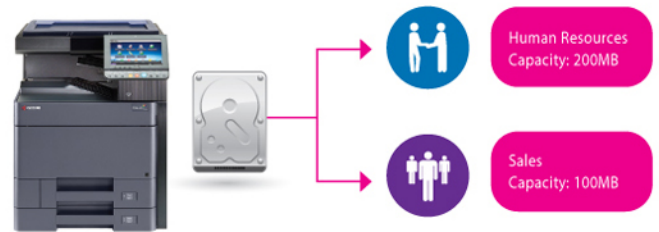
- KYOCERA Cloud Connect (Optional):** Retrieve and print files in Google Drive and Evernote[®], a cloud service provider, directly from any KYOCERA HyPAS-enabled MFPs. Users can even upload scanned files directly to Google Drive and Evernote[®] – directly from the MFP, without going through a computer.
- Support WiFi Direct:** Support IB-35 Wireless LAN (Optional), makes print/scan via AirPrint/Google Cloud Print/Mopria/KYOCERA Mobile Print/KYOCERA MyPanel much easier.





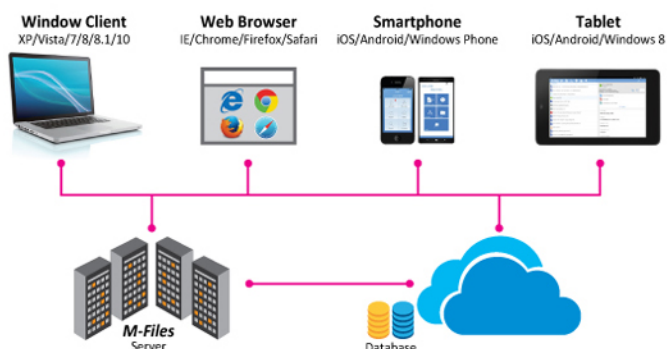
Secure Documents

- **Password Protection Setting:** Allow administrator to set Password Policy to limit user access to designated capacity.
- **Private Print:** Release print job at the device by entering a preset four-digit access code when making a print at KYOCERA KX Driver.
- With the aid of **Network Authentication**, IT Department can manage user authentication easily by incorporating with centralized Authentication Server (NTLM, Kerberos, KYOCERA Net Manager*).



* Optional

- **FAX Memory Overwrite (Optional):** Erase FAX memory after sending or receiving for confidentiality.
- **Security Watermark:** Distinguish original from copies and provides protection for sensitive document against duplication.
- **M-Files (Optional):** Manage all stuff e.g. documents, projects and business processes etc and adds intelligence by combining it with information from other systems (like SharePoint, Salesforces and SAP). This ensures you always find what you need, no matter what system you are using.
- **KYOCERA Data Security Kit (Optional):** Encrypt data before storing in the hard drive and automatically overwrite all data stored in the hard drive when the data becomes unnecessary.





Go Green

Design for energy savings

- **Fast warm up:** With the new IH fuser, the warm up time is shorter and power consumption is less.
- **Weekly Timer:** Allow administrator to preset the machine on and off time to maximize power savings.
- **EcoPrint:** Flexible EcoPrint setting to consume less energy and toner.
- **Energy Saver:** 1.0w or less power consumption at Energy Saver Mode.

Protect the environment

- Leading Long-life Mega Surface Amorphous Silicon (a-Si) Drum (TASKalfa 4052ci/5052ci/6052ci), developer and replacement parts.
- Parts for Recycling.
- Non-toxic Materials.
- Quiet operation design for a comfortable Working Environment.



Eco Mark (Japan)



EcoLeaf Environmental Label (Japan)



Law on Promoting Green Purchasing (Japan)

KYOCERA Document Solutions has been actively promoting the acquisition of various environment labels, aiming to provide products that are safe and comfortable for our customers to use and have minimal environmental impact.

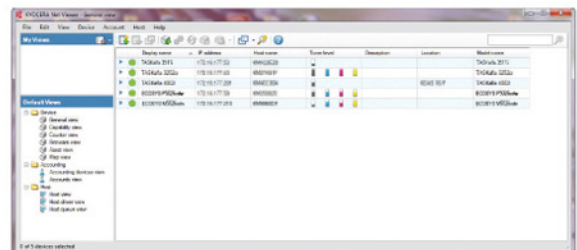
Simplify Management

Smart utilities for managed print and minimize related device management costs.

- **KYOCERA Command Center RX:** By using a web browser, the authorized administrator can access the built-in KYOCERA Command Center RX and check the operation status of the device, toner level, paper availability, as well as change settings related to security, network printing and advanced network setting etc.



- **KYOCERA Net Viewer:** A comprehensive network management tool used to monitor, maintain, and update up to 100 network printing devices locally and remotely. Through KYOCERA Net Viewer, administrators can simply install and update firmware on all KYOCERA connected devices while easily monitoring printed black/color pages, device configuration, accounting, toner usage, and alerts. By implementing KYOCERA Net Viewer, the manpower required to monitor connected devices is greatly reduced.



- **KYOCERA Net Manager (Optional):** Protect confidential data, manage & control the overall output (copy/print/scan) and get detailed reports. Users can keep an overview of personal printing jobs with web browser. It greatly simplifies scanning processes as it automatically displays a set of personalized options.

By adding the Card Authentication Kit (Optional) for KYOCERA Net Manager, you are able to swipe ID Card to get print document directly. User administrator can also set the IC Cards to allow quick and secure access with pre-defined user restrictions such as color output restrictions and output quota.



Main Specifications					
Model	TASKalfa 2552ci	TASKalfa 3252ci	TASKalfa 4052ci	TASKalfa 5052ci	TASKalfa 6052ci
Main Function	Copy, Print, Scan, Fax (Optional)				
Writing Method	Semiconductor Laser				
CPU	T1024 (Dual Core) 1.0GHz		T1024 (Dual Core) 1.2GHz		
Print Speed (A4) (Mono/Color)	25/25 cpm	32/32 cpm	40/40 cpm	50/50 cpm	60/55 cpm
Scanning Speed (A4) 300dpi	DP-7100 (Mono/Color)	Simplex	80/80 ipm		
		Duplex	48/48 ipm		
Scanning Speed (A4) 300dpi	DP-7120 (Mono/Color)	Simplex	48/48 ipm		
		Duplex	15/15 ipm		
Scanning Speed (A4) 300dpi Dual Scan	DP-7110 (Mono/Color)	Simplex	80/80 ipm		
		Duplex	160/160 ipm		
Memory	Standard 4GB (Max. 4GB)				
SSD/HDD Capacity	SSD 32GB (Standard) / HDD 320GB (Optional)		SSD 8GB (Standard) / HDD 320GB (Standard)		
Warm Up Time	18 seconds		17 seconds		
Paper Capacity	Standard	2 x 500 sheets (Cassette) + 150 sheets (MPT)			
	Maximum	7,150 sheets (Main Unit + 2 x 1,500 sheets PF-7110 x1 + 3,000 sheets PF-7120 x1 + MPT)			
Paper Size	Cassette	Min. A6R – Max. SRA3(320mm x 450mm); Cassette 1 Min. A6R – Max. A4R (Legal)			
	MPT	Min. A6R – Max. SRA3(320mm x 450mm) & Banner Print of 1,200mm			
Paper Weight	Cassette / MPT	52 – 300 g/m ²			
Duplex Printing	Paper size: A6R – SRA3(320mm x 450mm); Paper weight: 64 - 256 g/m ²				
Output Capacity	Max. 500 sheets + 100 sheets face-down with Inner Job Separator				
Control Panel	9 inch Color Touch LCD Panel				
Dimension (W x D x H) (Main Unit)	602mm x 665mm x 790mm				
Weight (Main Unit) / Power Source	Approx. 89 kg / 220V - 240V 50Hz/60Hz		Approx. 92 kg / 220V - 240V 50Hz/60Hz		
Power Consumption (Standard configuration)	Copy/Print Mode	500W	600W	730W	860W
	Stand-by Mode	60W			
	Energy Saver	0.9W			
Noise (ISO7779 / ISO9296)	Copy/Print Mode	67dB(A)	68dB(A)	70dB(A)	71dB(A)
	Stand-by Mode	35dB(A)			
Safety Standard : GS/TUV/CE	This unit is manufactured according to ISO 9001 quality standard and ISO 14001 environmental standard. RoHs compatibility				
Copy Functions (Standard)					
Copy Size / Resolution / Multiple Copy	Max. A3 (Legal) – Min. A6R / 600 x 600 dpi / 1-999				
First Copy Time (Mono/Color)	6.4/8.5 seconds	5.3/7.0 seconds	4.5/5.9 seconds	3.7/4.8 seconds	3.4/4.4 seconds
Zoom Ratio	Manual	25% – 400% (1% per Step)			
	Pre-defined	7R5E Easy and Detailed setting			
Print Functions (Standard)					
Resolution	1,200 x 1,200 dpi; 4,800 x 1,200 dpi level				
PDL	PRESCRIBE, PCL6 (PCL-XL, PCL 5c), KPDL3 (Postscript 3 compatible), XPS, OpenXPS, PDF Direct Print Ver. 1.7				
First Print Out Time (Mono/Color)	7.0/9.2 seconds	5.9/7.7 seconds	5.1/6.5 seconds	4.3/5.4 seconds	3.8/5.1 seconds
Supported Protocol	TCP/IP, NetBEUI, FTP, Port 9100, LPR, IPP, IPP over SSL/TLS, WSD Print, Apple Bonjour				
Operating System Supported	Windows Server 2003, Windows Server 2008, Windows Server 2008 R2, Windows Server 2012, Windows Server 2012 R2, Windows XP, Windows Vista, Windows 7, Windows 8, Windows 8.1; Apple Macintosh OS X 10.5 or later; Linux				
Interface	USB 2.0 High Speedx1; Ethernet 10BASE-T/100BASE-TX/1000BASE-T; USB Host Interface (USB Host)x4; NFC TAGx1				
USB Memory Printing Format	TIFF, JPEG, PDF, XPS				
Mobile Printing	AirPrint, Mopria, KYOCERA Mobile Print				
Print Features	Encrypted PDF Direct Print, IPP printing, e-mail printing, WSD print, secure printing via SSL, Quick copy, proof and hold, private print, job storage and job management functionality, Airprint				
Scan Functions (Standard)					
Color Selection	Auto Color (Color/Gray); Auto Color (Color/B&W); Full Color; Grayscale; Black & White				
Resolution	600dpi, 400dpi, 300dpi, 200dpi, 200x400dpi, 200x100dpi				
File Format	TIFF, JPEG, XPS, OpenXPS, PDF (MMR/JPG compression/High-compression PDF), PDF/A, Encrypted PDF, Searchable PDF (Optional)				
Image Type Mode	Text, Photo, Text + Photo, Text (Fine Line)				
Transmission Type	Scan to SMB; Scan to E-mail; Scan to FTP or FTP over SSL; Scan to USB; TWAIN Scan; WSD Scan				
Address Storage	2,000 addresses (Common address list), 500 groups (Group address list)				
Fax Functions (Optional)					
Original Size	Max. A3 (Legal) – Min. A6				
Coding Method / Transmission Speed	MMR, MR, MH, JBIG / 33.6kbps				
Memory / DUAL FAX / Network Fax	12MB / Yes / Yes				
Fax Features	Opt. Internet-fax, network faxing, rotate transmission, rotate reception, duplex reception, memory reception, FAX BOX, remote diagnostics, dual fax with second fax system				
Options					
Platen Cover	Platen Cover Type E				
Document Processor	DP-7100: 140 sheets RADF Type; DP-7110: 270 sheets One-path duplex scanning Type; DP-7120: 50 sheets RADF Type (TASKalfa 2552ci / TASKalfa 3252ci only)				
Paper Feeder	PF-7100: 500 sheets x 2; PF-7110: 1,500 sheets x 2 (A4/Letter); PF-7120: 3,000 sheets Large capacity side deck (A4/Letter)				
Finisher	4,000 sheets Finisher	DF-7110: 4,000 sheets Finisher; AK-7100: Attachment Kit; PH-7C: Punch Unit; BF-730: Booklet Finisher; MT-730(B): 7 Bin Mailbox			
	1,000 sheets Finisher Inner Finisher	DF-7120: 1,000 sheets Finisher; AK-7100: Attachment Kit; PH-7C: Punch Unit			
		DF-7100: Inner Finisher; PH-7120: Punch Unit			
Job Separator	JS-7100 : Inner Job Separator				
Fax System / Internet FAX	Fax System 12 / Internet FAX Kit(A)				
Data Security	Data Security Kit(E) AC				
Card Authentication	Card Authentication Kit(B) AC				
Gigabit Ethernet Board / Wireless LAN Interface	IB-50 / IB-35 (802.11 b/g/n/Wireless LAN/WiFi Direct)				
Storage Device	HD-12: HDD 320GB (TASKalfa 2552ci/ 3252ci only)				
Embedded OCR	Scan Extension Kit(A)				
Banner Paper Tray / Numeric Key Pad	Banner Guide 10 / NK-7100				
Consumables					
Toner Kit	TK-8349 (C/M/Y): 12,000 pages TK-8349 (K): 20,000 pages	TK-8339 (C/M/Y): 15,000 pages TK-8339 (K): 25,000 pages	TK-8529 (C/M/Y): 20,000 pages TK-8529 (K): 30,000 pages	TK-8519 (C/M/Y): 20,000 pages TK-8519 (K): 30,000 pages	
Maintenance Kit	MK-8335 (A/B): 200,000 pages with 5% A4 coverage MK-8335 (D/E): 600,000 pages with 5% A4 coverage		MK-8515 (A/B): 600,000 pages with 5% A4 coverage		
Staple Cartridge	SH-10: Staple for DF-7100; SH-12: Staple for DF-7110/DF-7120				
Waste Toner Bottle	WT-8500: 40,000 sheets				



KYOCERA Document Solutions Singapore Pte. Ltd.
12 Tai Seng Street #04-01A Luxasia Building Singapore 534118
Tel : (65) 6741 8733 Fax: (65) 6748 3788
www.KyoceraDocumentSolutions.com.sg

*KYOCERA does not warrant that any specifications mentioned will be error-free. Specifications are subject to change without notice. Information is correct at time of going to press. All other brand and product names may be registered trademarks or trademarks of their respective holders and are hereby acknowledged.

KYOCERA Business Partner



Scan for more information

