

KYOCERA ECOSYS M3540idn

40 PPM Laser Printer • Scanner • Copier • Fax



Reliability.....	Excellent
Multitasking.....	Good
Administrative Utilities	Very Good
Feedback to Workstations	Good
Ease of Network Setup.....	Very Good
Print Drivers.....	Very Good
Scan Functions.....	Good
Print Quality.....	Very Good
Copy Quality	Very Good
Print Productivity	Good
Copy Productivity.....	Very Good
Ease of Use.....	Very Good
Feature Set.....	Excellent
Security Features.....	Not Rated
Environmental Features	Not Rated
Toner Yield	Very Good
Cost per Page	0,00417€ (Ger.), 0.319p (UK)

BLI RECOMMENDATION

Targeted towards small- to mid-size workgroups, the 40-ppm KYOCERA ECOSYS M3540idn gave a strong overall performance in BLI's two-month lab evaluation, proving to be highly reliable, requiring no service and experiencing only a single misfeed during its 75,000-impression durability test. The HyPAS (Hybrid Platform for Application Software) embedded in this model means that the unit can integrate with a wide variety of solutions from KYOCERA and third-party vendors, such as MyQ, which allows administrators to manage, control and monitor documents and their costs across a printer fleet from a web-based console, PinPoint Scan, an efficient scanning tool that simplifies the scanning process and provides secure data transmission with SSL encryption, Teaching Assistant (to automate scoring and compiling grading information), plus a SharePoint connector. Providing standard print, copy, scan and fax functionality, this model includes a 75-sheet RADF and a USB port that allows for direct printing of files from a flash drive. Very easy to use both from the desktop using the graphical KX 6.x driver and for walkup jobs via the touchscreen panel, the unit is also easy to manage using KYOCERA Net Viewer, which can assign specific alerts to different recipients, while KYOCERA Command Center RX provides users with a good level of detail about device status, paper size, approximate percentage of paper remaining and

Test duration: Two months, including a 75,000-impression durability test.

Maximum monthly duty cycle: Up to 150,000 impressions.

Manufacturer's recommended monthly volume: Information not available

More information on the KYOCERA ECOSYS M3540idn is available through bliQ (www.buyerslab.com/bliQ).

toner supplies. Output produced by the M3540idn was rated very good overall in both print and copy modes, with sharp text, an excellent visible halftone range and clean lines. In speed testing, the unit was competitive overall, though its first-copy-out times were among the fastest tested to date in its class. KYOCERA's ECOSYS technology employs long-life consumables to minimize environmental impact. BLI highly recommends the KYOCERA ECOSYS M3540idn for small- to mid-size workgroups.

STRENGTHS

- Highly reliable—near-flawless durability performance
- Crisp fonts, excellent halftone range and fills in print mode
- Embedded HyPAS platform supports a wide variety of KYOCERA and third-party solutions including MyQ (which can monitor and control costs across an entire fleet), PinPoint Scan (which simplifies the scanning process and provides secure data transmission), Teaching Assistant (an automated grading system), plus a SharePoint connector
- Optional support for wireless printing and AirPrint enabled for mobile printing
- Faster than average first-copy-out times from the document feeder and the platen
- Graphical and easy-to-use KX 6.x driver and touchscreen with colour-coded menus and hard keys simplifies programming jobs
- PRESCRIBE page design and control language lets users create complex graphics, logos and multipart forms independently of the system, and save and update them on device memory to allow for printing on demand from the control panel
- Above-average standard and maximum memory capacities; RAM Disk feature treats RAM like a hard disk to provide secure storage at no extra cost
- Accommodates above-average paper weights through the bypass tray
- USB port at the front of the unit allows users to scan to and print files from a flash drive
- KYOCERA Net Viewer provides alerts to different recipients for specific events, either on a device-by-device basis or for an entire group of devices; KYOCERA Command Center RX provides users with detailed feedback on consumables
- KYOCERA's ECOSYS technology employs long-life consumables to minimize the unit's environmental impact

WEAKNESSES

- Slower than average scan speeds in colour and black
- Slower than average first-page-out time from overnight sleep

TEST RESULTS AND OBSERVATIONS

+ , - and ○ represent positive, negative and neutral attributes, respectively.



RELIABILITY

EXCELLENT

- + The unit is certified highly reliable by BLI after completing a 75,000-impression durability test and 15,000 scans with just one misfeed recorded and no service required.
- + The maintenance kit, which includes the drums and developer units, is rated for 300,000 impressions (coinciding with the PM schedule).

PMs/Malfunctions	Service Required	Meter Count (Impressions)	ADF Count (Scans)
Starting Meter Count		0	0
Ending Meter Count		75,000	15,000
Total Misfeeds/Misfeed Rate	1/ Not applicable		0/Not applicable
Service Calls	0		



MULTITASKING

GOOD

- + The unit has good multitasking capabilities overall, with no delays observed between jobs.
- The number of print jobs that can be sent to the unit is limited only by memory, with jobs residing on the device rather than being fed one at a time over the network, as is common with devices in this class. However, users cannot change the order of jobs in the queue. There is no interrupt functionality and jobs are treated on a first-in, first-out basis.
- + The number of copy jobs that can be programmed ahead while a copy or print job is in progress is limited only by memory capacity; some devices enable users to reserve fewer jobs.
- Programming the next copy job can begin as soon as all the pages of the current copy job have been scanned.
- + The device automatically clears the settings when a user places documents in the feeder and does not require users to press any keys.

Primary Function	Secondary Function	Print	Scan	Copy
Print		Yes	Yes	Yes
Scan		Yes	No	Yes
Copy		Yes	Yes	Yes

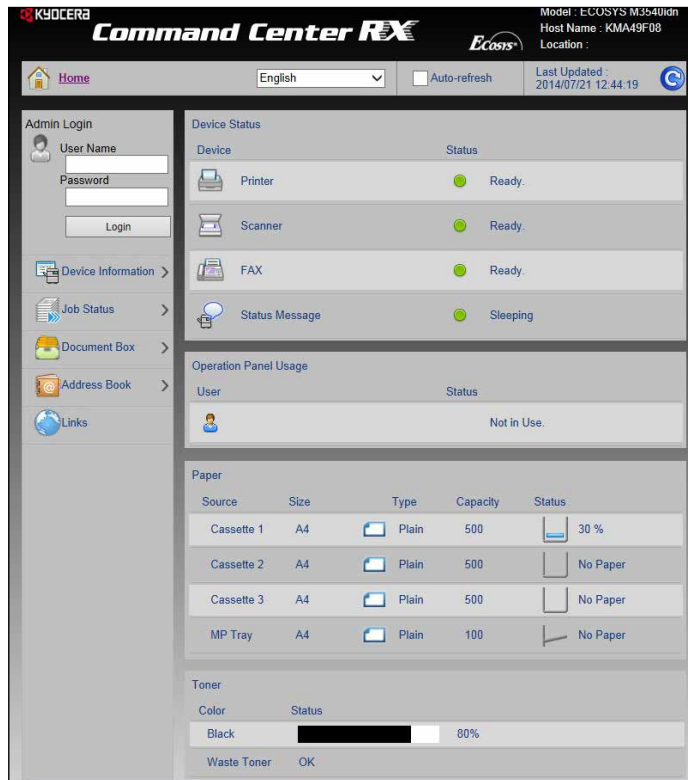
A "Yes" indicates that the user can initiate the secondary function while the primary function is taking place and that no further user intervention will be required for the secondary function to take place.



ADMINISTRATIVE UTILITIES

VERY GOOD

- + KYOCERA's administrative utility suite, which comes on the Product Library CD with the drivers and documentation, includes KYOCERA Net Viewer, Job Status Monitor and KYOCERA Command Center RX, the embedded web server.
- + KYOCERA Net Admin is a unified solution for network device management for both KYOCERA and competitive network printing devices. The utility allows the administrator to view page counts and device status and view and configure alerts for groups of devices on the network. Administrators can also access detailed information on individual devices such as the amount of toner remaining, configuration settings and event logs.
- + KYOCERA Net Admin supports a map view that allows each device to be dragged and dropped to its specific location, allowing faster navigation for technical support.



Command Center RX provides administrators with information about the unit and lets them handle tasks such as changing device settings, viewing device status and monitoring toner and paper supplies.

- + Command Center RX allows administrators to configure email alerts that can be sent to up to three recipients for error conditions, including paper jam, cover open and add toner/paper.
- + KYOCERA Net Viewer allows administrators to create groups of products based on reporting or error notification requirements. Within a "report group", an administrator can receive email reports outlining a wide variety of device statistics, including printed page volumes and consumable levels, at time intervals of their choice.

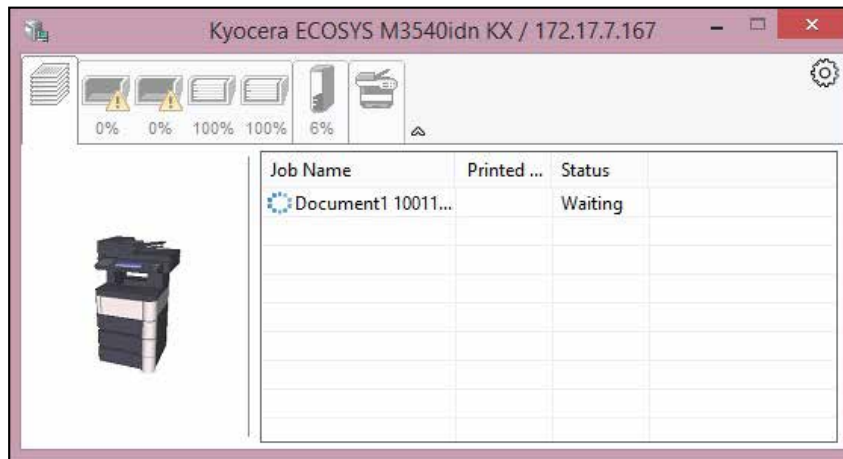
- + A software utility, KYOCERA Net Direct Print, is also included on the CD that enables direct printing of PDF, PostScript, PRN and PRESCRIBE files without having the respective applications installed on the PC. Using this utility, users can send multiple files at one time and alter settings such as quantity, duplexing, N-up printing and resolution.



FEEDBACK TO WORKSTATIONS

GOOD

- + Command Center RX provides users at the desktop with a good level of detail regarding the M3540idn, including device status, paper size, remaining paper and toner supplies.



- The pop-up Job Status Monitor utility, with an icon representing the device that can be placed on the desktop via the driver, provides toner and device status information, as well as audible alerts. Device status, which is also displayed graphically, includes printing complete, add paper, add toner, sleep, toner low, not connected, paper jam and cover open. However, the messages appear on all PCs that have the utility actively running, which could be distracting to users who may not care if the device is out of toner if they aren't actively or imminently printing to it. The utility also provides a link to the web page and can be placed anywhere on the screen and enlarged and adjusted for various degrees of opacity.
- + KYOCERA Net Viewer allows administrators to assign specific alerts or events to different recipients, either on a device-by-device basis or for an entire group of devices. Administrators can select all alert criteria in a single setup process.



EASE OF NETWORK SETUP

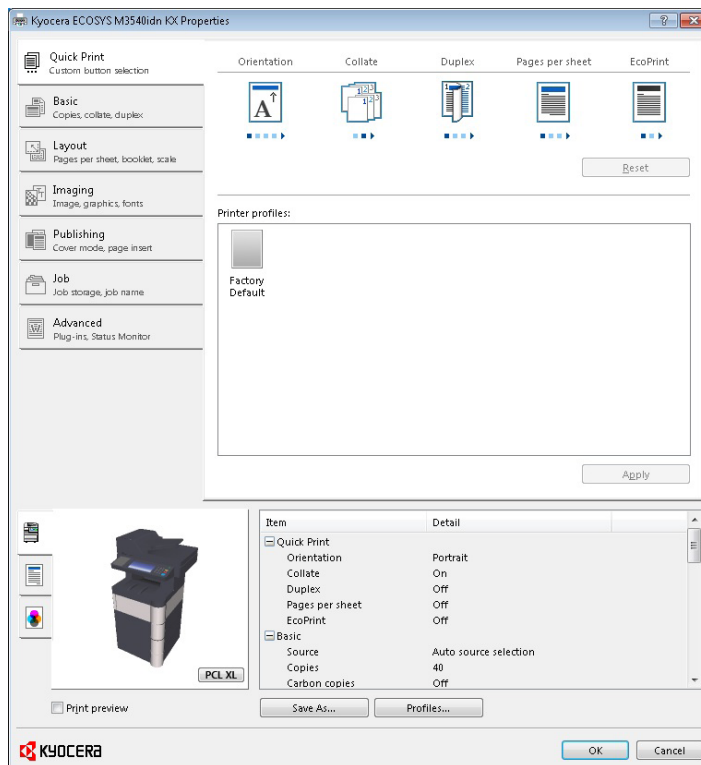
VERY GOOD

- Two people can easily lift the ECOSYS M3540idn, which ships fully assembled and does not use excessive packaging, out of its box, allowing users to be up and running in a few minutes. Starter cartridges with a rated yield of 6,000 impressions are packed together with the unit and need to be installed, but no packing strips have to be removed.
- + Installation of the drivers is highly automated. When the Product Library CD is inserted, administrators can choose from a number of options for ensuring environmental best practice including resource saving using a mix of virgin and recycled media; duplex printing as the default mode; and power management options to ensure low energy consumption during idle and sleep modes. The main window then auto populates with all KYOCERA devices on the network (either icon driven or as a list). After selecting the device with the Express Install option, just five clicks are required to install the KX 6.x driver, Status Monitor, Fonts and an Uninstall utility. The ports are all created automatically. Administrators can also clone device settings from one device to another using KYOCERA Net Viewer, and they can simultaneously install the drivers at multiple workstations on the network.



PRINT DRIVERS

VERY GOOD



Quick Print customizable tab in the KX 6.x driver allows users to select the most commonly used functions from the initial tab.

- The unit comes with KYOCERA's KX 6.x driver for various Windows operating systems, as well as Mac OS X 10.5 or later. Other supported environments include UNIX and Linux. The driver combines PCL XL (PCL 6 emulation), PCL 5e and KPDL (the company's PostScript emulation) into one, which uses less network bandwidth than installing separate drivers.
- + KYOCERA's KPDL (PostScript) and PCL XL drivers have an identical interface, and users can switch between the PDL settings from the Printing Preferences dialog box. Eco Print lets users to reduce the amount of toner used per job and can be set as the default setting.
- + The KX driver 6.x enables users to configure settings from the Printing Preferences dialog box with a clickable button that opens up the PDL Settings dialog and displays the current user-selected setting: KPDL, PCL XL, or PCL 5c. UI settings that were previously hidden such as the Security Watermark button are now shown but disabled if they are not supported by the PDL currently selected. Note that on client PCs in a client-server environment, users with administrative privileges can change the PDL from the Properties > Device Settings menu.
- + File size remains the same when printing multiple sets, regardless of whether "collate" is selected from the properties screen of the driver or from the print screen within an application.
- Technicians noted that accessing secure print jobs can be confusing initially, and requires five keystrokes. Secure print jobs are accessed via the Document Box hard key, which is used for job storage. BLI would prefer to have the ability to access secure print jobs from the job list, or via an assigned key.
- Users can release secure print jobs while the device is printing or copying, but not while scanning.
- + Multiple secure print jobs with the same PIN can be released simultaneously.
- After a job is released, users can delete jobs with the entry of a password.
- + Custom box on the Job tab allows users to type a job name up to 16 characters in length for job storage, making it easy for users to identify their job from their desktop or the device. The Advanced tab features selections for watermarking and Prologue/Epilogue, allowing users to insert one or more printing system language command files into specific locations of a print job. For example, a command file may contain a macro (a series of commands to accomplish a specific task), settings for printing system emulation, an electronic form, or a graphic object such as a logo or signature.
- + The PCL XL and KPDL drivers feature PRESCRIBE—a page design and control language—which enables graphics, logos and forms, including multi-part forms, to be created independently of the system and saved and updated on the device memory to allow for printing on demand from the control panel.

KYOCERA ECOSYS M3540idn Print Driver Features

	PCL 6	PostScript 3
Auto Feature/Device Detection	Yes	Yes
Booklet Printing	Yes	Yes
Collate	Yes	Yes
Max Paper Sources per Job	4*	4*
Mirror Image	No	Yes
Negative Image	No	Yes
N-up Printing	2 to 25	2 to 25
Overlay	No	No
Paper Gauge	No	No
Print and Hold	Yes	Yes
Proof Print	Yes	Yes
Quantity Selection	Up to 999	Up to 999
Reduction/Enlargement	Auto, 20% to 500%	Auto, 20% to 500%
Resolution Modes (dpi)	600, Multibit: 1200 dpi Quality (1800 x 600)	600, Multibit: 1200 dpi Quality (1800 x 600)
Save Settings	Yes	Yes
Secure Print	Yes	Yes
Watermarks/Custom Watermarks	Yes	Yes
Cover Mode	Yes	Yes
Poster Mode	Yes (up to 5 x 5)	Yes (up to 5 x 5)
Separator Pages	Yes	Yes

* Depending on the number of paper sources the unit has installed.



SCAN FUNCTIONS

GOOD

- + The device supports LDAP and allows users to scan to email, FTP, SMB or to a USB memory drive via the document box for printing or storage. File formats supported for scanning to all destination types include TIFF, PDF, Compact PDF, PDF/A (for archiving), Secure PDF, JPEG and XPS.
- Like most competitive models, the M3540idn offers colour scanning over the network or to a USB drive as standard, with a maximum resolution of 600 dpi. After a slight pause the device recognizes that a USB memory device has been inserted and displays its file contents. Users can scan to the main folder on the drive, and are presented with options for duplex, resolution, density, and file name entry. There are no means of scanning into subfolders.
- Tested scan speeds were below average for models in this speed range in both simplex and duplex, colour and black.
- + Tested scan file sizes in black and colour are smaller than average.
- The scan driver is TWAIN compliant.

Scan Speed in IPM | Competitive Average

FULL COLOUR		
1:1	27.2	43.1
2:2	13.1	30.0
BLACK		
1:1	35.9	43.0
2:2	17.1	31.8

Files are scanned at 300 dpi in PDF format.

Scan File Size in KB | Competitive Average

Full Colour (no compression)	695	1263.0
Full Colour (best compression)	136	417.3
Black	56	361.1

Testing is conducted with single-page files scanned at 300 dpi in PDF format.



PRINT QUALITY

VERY GOOD

- + Text was characterized by cleanly formed characters, with above average boldness and sharpness. An average amount of toner overspray was visible in text and line art, even when output was viewed without magnification. In line art, vertical and horizontal lines were smooth, circles were fully formed and diagonal lines showed no evidence of stair-stepping. Closely spaced fine lines remained appeared blurred, but line weight consistency was above average. Solids exhibited smooth fills, average darkness, consistent toner coverage and average density readings. Halftones were visible from the 10 to 100 percent dot-fill levels, with distinct transitions between all levels. Halftone pattern showed no evidence of graininess and minimal banding.

Print Quality

Text	Very Good
Line Art	Very Good
Halftone Pattern	Good
Halftone Range	Excellent
Solids	Very Good

Print Density

KYOCERA ECOSYS M3540idn	1.31 to 1.36
Average for devices in this class tested to date	1.12 to 1.69

Measurements are based on four readings corresponding to four different solid black locations on output. The higher the density reading, the darker the image.

Print Density Average

KYOCERA ECOSYS M3540idn	1.35
Devices in this class tested to date	1.45

The higher the density reading, the darker the image.

Halftone Range

KYOCERA ECOSYS M3540idn	10% to 100%
Halftone increments on test original	10%, 20%, 30%, 40%, 50%, 60%, 70%, 80%, 90%, 100%

The halftone range test original consists of 10 blocks of increasing dot-fill levels.



COPY QUALITY

VERY GOOD

- Characters were fully formed, and there was average smoothness of curves, serifs and lines, but technicians noted voids in text when output was viewed under magnification; to the unaided eye, text had below-average darkness. To the unaided eye, line thickness appeared consistent, but technicians noted line thickness varied when viewed under magnification. Circles were fully formed and diagonal lines showed no evidence of stair-stepping. An average amount of toner overspray but no haloing was visible when text and line art output was viewed under magnification. Solids had average darkness and above average consistency of coverage, and competitive density readings. Halftone pattern in copy mode showed some graininess but no banding. Halftones were visible from the 10 to 100 percent dot-fill levels, with distinct separations between all levels.

Copy Quality

Text	Very Good
Line Art	Very Good
Halftone Pattern	Good
Halftone Range	Excellent
Solids	Very Good

Black Copy Density

Original	1.68 to 1.78
KYOCERA ECOSYS M3540idn	1.32 to 1.37
Density for devices in this class tested to date	0.90 to 1.89

Measurements are based on two readings corresponding to two different solid black locations on the output. The higher the density, the darker the image.

Copy Density Average

KYOCERA ECOSYS M3540idn	1.32
Devices in this class tested to date	1.44

The higher the density reading, the darker the image.

Visible Halftone Range

KYOCERA ECOSYS M3540idn	15% to 100%
Halftone increments on test original	15%, 29%, 53%, 77%, 83%, 91%, 95%, 100%

The halftone range test original consists of eight blocks of increasing dot-fill levels.



PRINT PRODUCTIVITY

GOOD

- When using the PCL driver to print BLI's job stream, which simulates the type of traffic experienced in a busy multi-user environment, the unit's running speed and efficiency is competitive.
- When printing multiple sets of a 10-page document from the PCL driver, the M3540idn's running speed is competitive in simplex and in duplex.
- First-print time for Word, PDF and PowerPoint files is competitive.
- First-page time from overnight sleep is slower than average.

First-Page Time from Overnight Sleep | Competitive Average

KYOCERA ECOSYS M3540idn	26.78
Tested Competitive Average	17.31

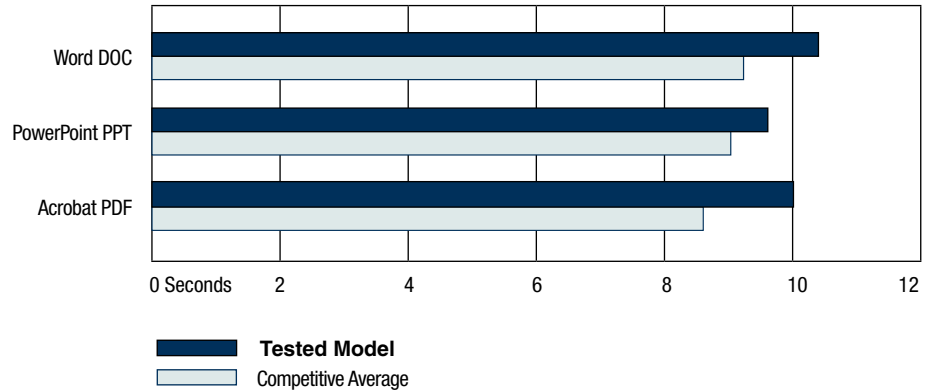
Device sits idle overnight; a single-page black Word document is sent to the device; first-print time indicates the time it took to RIP the image and deliver the first page of the test document to the output tray.

First-Page Times by File Types | Competitive Average

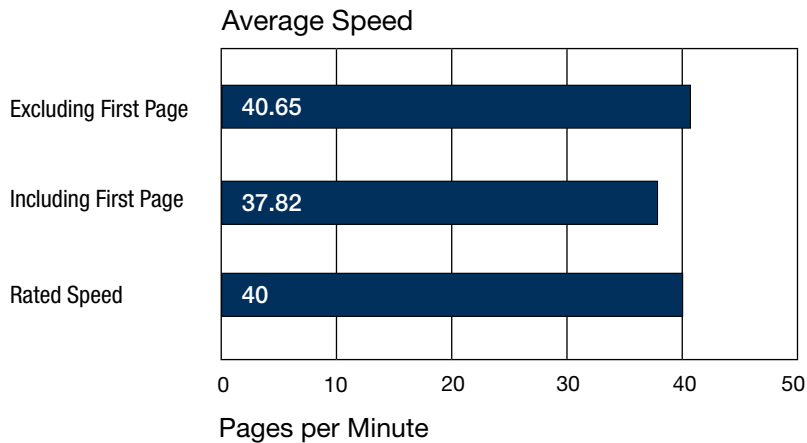
Word DOC	Black Text	10.41	9.24
PowerPoint PPT	Colour Graphic/Text	9.62	9.04
Acrobat PDF	Black Graphic/Text	10.02	8.61

First-print time indicates the time it took to RIP, image and deliver the first page of the test document set to the output tray. The unit's print speeds were tested at the default 600 dpi using the PCL driver.

First-Page Times by File Types



BLI's Tested Print Speeds versus Manufacturer's Rated Speeds



Average Print Productivity | Competitive Average

	SPEED IN PPM		PERCENT OF RATED SPEED	
	Tested Model	Competitive Average	Tested Model	Competitive Average
1:1	33.9	35.8	84.8	86.0
1:2	19.3	21.0	48.1	50.1

Efficiency is tested using a 10-page full-colour document and a 10-page black document. BLI obtains the overall efficiency for each mode by averaging the efficiency ratings (derived by dividing the tested speed of the device by the rated speed and then multiplying by 100) for each run length (1, 5, 10 and 20 sets). The unit's efficiency was tested using the PCL driver.

Job Stream | Competitive Average

	SPEED IN PPM		PERCENT OF RATED SPEED	
	Tested Model	Competitive Average	Tested Model	Competitive Average
BLACK	31.5	30.4	78.8	72.3

The unit was tested with the PCL driver. BLI's job stream includes Word documents, Outlook email messages, Excel spreadsheets, PowerPoint, HTML and Acrobat PDF files, totalling 19 pages. This test simulates the type of traffic a typical device might experience in a real-world, multi-user environment. All of the files are sent to the device as a group, at which time the stopwatch begins; timing ends when the last page of the last file exits the device. Job stream efficiency is determined by the percentage of the rated speed at which the device operates when producing real-world jobs. The closer the rate is to 100%, or if it exceeds 100%, the more efficient the device.



COPY PRODUCTIVITY

VERY GOOD

- When producing multiple sets in black copy mode, the M3540idn's running speed is competitive in simplex, and in 1:2 and 2:2 duplex modes. Its efficiency is among the highest in its class in simplex mode, and competitive in both duplex modes
- + First-copy out times from both the document feeder and the platen were among the fastest in the group.

First-Copy Time in Seconds | Competitive Average

Platen	7.13	8.42
Document Feeder	6.86	9.32

Average Copy Productivity | Competitive Average

	SPEED IN PPM		PERCENT OF RATED SPEED	
1:1	36.2	34.8	90.5	84.6
1:2	19.5	20.5	48.7	49.4
2:2	19.6	20.5	48.9	49.2

Efficiency is tested using a 10-page black document. BLI obtains the overall efficiency for each mode by averaging the efficiency ratings (derived by dividing the tested speed of the device by the rated speed and then multiplying by 100) for each run length (1, 5, 10 and 20 sets).



EASE OF USE

VERY GOOD

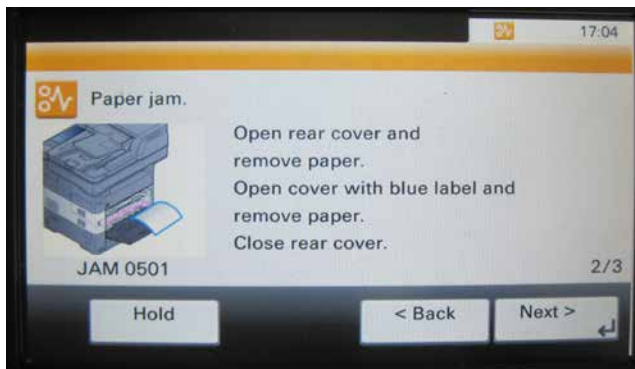


The KYOCERA ECOSYS M3540idn control panel's menu system is easy to navigate, with hard keys on the left for copy, scan and fax functions. A tilting, full-colour touchscreen displays the current function, plus access to Custom Box, Job Box, Removable Memory, Sub Address Box and Polling Box. To the right of the display are an alphanumeric keyboard and hard keys for Clear, Stop and Reset, plus power and logout hard keys and an Energy Saver button.

- Although the touchscreen display can be tilted, the extent of the tilt is very limited, potentially making it awkward to access for users in wheelchairs, particularly if the device is installed with a full set of optional paper trays as it was in BLI's testing.



Procedures for replacing toner are easy. Though it can't be replaced while the unit is running, the cartridge is accessible from the front and lifts out easily, after a blue lever has been released.



Should a misfeed occur, the display provides clear instructions on how to access and remove the jam.



Misfeed access is either at the front or at the rear (shown above) of the device.



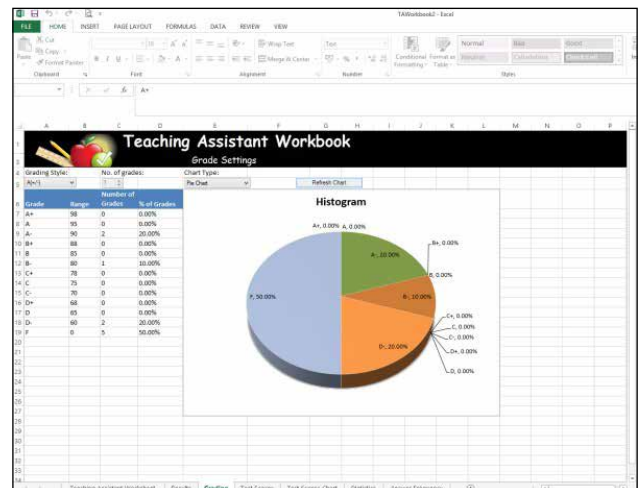
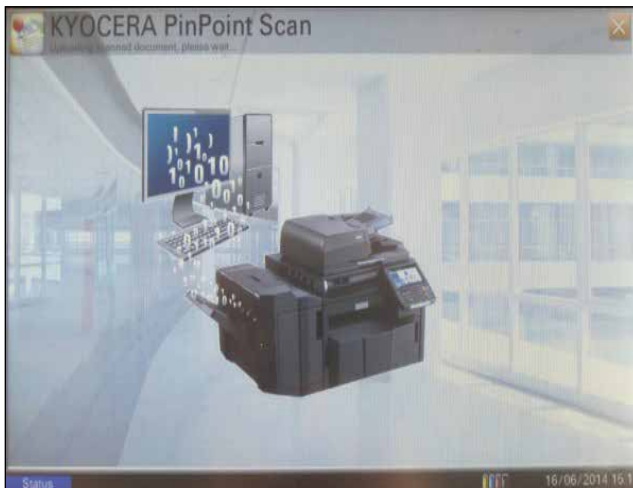
BLI technicians noted that loading paper trays is easy, with sliding paper guides which slide in sync. Custom paper sizes must be confirmed on the touchscreen.



FEATURE SET

EXCELLENT

- + KYOCERA's HyPAS platform enables tight integration between this unit and both KYOCERA and third-party solutions for document management, scan capture and distribution, device management, cost control and security. Standard job accounting allows up to 100 access codes for simplified device-based tracking.



The ECOSYS M3540idn's HyPAS platform enables it to run MyQ which allows administrators to manage, control and monitor documents and their costs across a printer fleet from a web-based console, PinPoint Scan (which simplifies the scanning process and provides secure data transmission), Teaching Assistant (which automates scoring of tests and compiles grade information) and many other KYOCERA and third-party solutions.

- + Even when it's not configured with the wireless option, the unit's Apple AirPrint capability allows printing from iOS smartphones or tablets. Other popular solutions include Kyocera Cloud Connect which enables users to print from and scan to the cloud directly from the control panel
- + The unit's standard memory capacity of 1 GB and maximum memory of 2 GB are among the highest for models in its class. Two optional hard drives are also available for purchase: a 32-GB or 128-GB SSD hard drive.
- The M3540idn has a competitive standard paper capacity of one 500-sheet drawer. The 100-sheet bypass tray handles up to 220 gsm media, which is heavier media than accommodated by most of its peers.
- + The unit's maximum paper capacity of 2,600 sheets, via four optional 500-sheet paper drawers, is above average in this class.
- Automatic duplexing is standard, as is an RADF, as with the majority of models in this group.
- + KYOCERA's RAM Disk feature allows a portion of the device's RAM to be treated like a hard disk to facilitate secure job storage without incurring the extra expense of a hard drive. As RAM is volatile memory it can only retain data while connected to a power supply or a device, so users need not be concerned about confidentiality or data security.
- + KYOCERA has a 'Private Print' function for secure printing of confidential documents after a PIN code has been entered. Although no additional memory is required to start using Private Print, KYOCERA recommends adding memory or SSD hard drive for extensive use.
- + A USB port at the front of the unit allows users to print files from and scan files to a flash drive. When printing files from a flash drive, users can browse folders, print one or all of the contained documents, as well as view file details (file name, file size, format and date of creation).
- + Net Direct Print is a user-friendly utility allowing for simple submission of PDF files to the device without opening the PDF; users can choose one or multiple PDF files and submit them to the direct print workflow either by dragging-and-dropping or right clicking them or by browsing. Users can also set up print profiles that further simplify the submission process and are ideal for users operating the device as a short run print-on-demand resource.
- + An ID card copy option enables users to easily copy both sides of an ID or business card on to a single side of a page.
- + Features of the unit's standard fax functionality includes an ITU.T Super G3 modem with a speed of 33.6 Kbps, 100 speed dial destinations and an address book that holds up to 200 entries.



SECURITY FEATURES

NOT RATED

Administrator password length (characters)	7 alphanumeric
Authentication	
Network user authentication	Yes
Windows	Yes
Novell NetWare NDPS	INA
LDAP authentication	Yes
802.1x wireless authentication	Yes
Kerberos protocol support	Yes
Authentication via department or user ID codes that are registered on the machine	Yes
Number of codes	100
Restrict usage of colour	Yes
Restrict usage of other features	Yes
Authenticated printing	Yes
Common Criteria Certification	INA
Control panel lock/disablement	Yes
Digital user signature	INA
Encrypted PDF mode/encrypted scanning	Yes/No
Encrypted secure print	Yes
Hard drive encryption	NA
Hard drive lock	NA
Hard drive overwrite	NA
Max number of overwrites after every job	NA
Overwrite method	NA
IP address filtering	Yes
IPsec	Yes
Job logs (e.g., activity monitoring, compliance auditing)	Yes
MAC address filtering	No
Password-protected mailboxes	Yes (with optional SSD hard drive)
Password-protected web page	Yes
Port disablement	Yes
Removable hard drive	NA
Secure fax	
Encrypted TX/RX	Yes
Fax forwarding	Yes
Fax line access prevention	INA
Fax memory lock	INA
Confidential mailbox	Yes
Secure print	Yes
Secure Sockets Layer (SSL)	Yes
SNMPv3 support	Yes
Third-party security features	Optional
Transport layer security	Yes
Unauthorised copy prevention (secure watermark)	No
USB block	Yes
Additional security features	RAM disk feature

INA: The vendor declined to provide this information

NA: Not applicable



ENVIRONMENTAL FEATURES

NOT RATED

Specified capable of running 30% post-consumer recycled paper	Yes
Specified capable of running 50% post-consumer recycled paper	Yes
Specified capable of running 100% post-consumer recycled paper	Yes
Instant/Quick Fusing	No
Duplexing	Yes
Toner-save mode	Yes (Eco print)
Energy-save mode/modes	Yes
RoHS compliant	Yes
In-house environmental policy for this unit?	Yes
Percent of product made from previous devices	1.2%
Percent of product made from post-consumer materials	INA
Percent of product made from pre-consumer materials	1.2%
Percent of product made from bio-based materials	0
Product designed for recycling (easily disassembled, no binding agents)	Yes
Items that can be recycled	All except sponge, seal, magnet etc.
Hardware remanufacturing program for this product	No
Toner cartridge recycling program for this product	Yes
Prepaid label for return of toner cartridges/bottles for this unit	No
Toner recycling system	No
Ability to program features such as duplexing and auto shut-off over entire fleet	Yes
What tool can be used to do this?	From system menu
Green packaging materials for the product	Yes
Green packaging materials for its consumables	Yes
Packaging materials used	Cardboard, pulp mould made cushion
Typically, who is responsible for getting rid of packaging materials after products are shipped to the customer location (e.g., customers, dealers, shippers)?	Customers
Eco-Label Certifications	
ENERGY STAR	Yes
Other	Blue Angel RAL-UZ 171, Nordic Swan
Tested energy consumption levels of the device (watts)	
Ready/Idle	61.6
Energy-save	2.4
Sleep mode	<0.3
During Printing	685
How fast can this product be programmed to go into the following modes (minutes)	
Ready/Idle	0
Energy-Save	NA
Sleep mode	1 (1-240)
Can the above settings be programmed by a walkup user?	Yes
First-print time out of sleep mode (seconds)	5.77
Emissions output from this device for the following substances (mg/h)	
Ozone	Below detectable limits
Styrene	0.15
Benzene	Below detectable limits
TVOC	4.4
Dust	Below detectable limits
Other	NA

INA: The vendor declined to provide this information

NA: Not applicable



TONER YIELD

VERY GOOD

- The tested yield of the M3540idn's black toner cartridge is competitive for MFPs in this speed range tested to date.
- + In BLI's testing, the two black cartridges tested exceeded their rated yield by an average of 6,824 impressions.
- As this gap between tested and rated yield clearly has strong implications for device TCO, it should be noted that BLI has observed, during long-term testing of other KYOCERA models over the whole life of their drums, that the difference between tested and rated yield narrows considerably as the drums approach the end of their expected life (in this case, 300,000 impressions).

Tested Toner Yield | Competitive Average

Tested Impressions	21,324	23,035
Rated Yield	14,500	20,808
Rated Drum Yield	300,000	153,786

Based on BLI's tested toner yields (an average of two cartridges) using the ISO 19752 toner yield test original.

Tested Toner Cost per Page

	France	Germany	Italy	UK
Toner Cost per Page ²	0,00475€	0,00417€	0,00483€	0.319p

Note that BLI's cost per page does not include the price for the drum/maintenance kit, as it is service replaceable. As such, users must purchase a service contract which will increase cost per page/cost of ownership. Toner cost per page is based on KYOCERA's web pricing and BLI's tested toner yields (based on an average of two print cartridges) from the PCL XL driver using the ISO 19752 toner yield test original.

SUPPORTING TEST DATA

Test Environment: Testing was conducted under ambient conditions of 22°C (+/-2.7°C) and 45% RH (+/-10%); monitored daily by two Seven-Day Temperature/Humidity Chart Recorders, in Buyers Lab's test facility at Unit 1 Station Industrial Estate, Wokingham, Berkshire RG41 2YQ. All products lab tested by BLI are powered by dedicated circuits that are protected by ESP (Electronic Systems Protection, Inc.) surge protectors to prevent transient power and communication disturbances from affecting equipment under test.

Test Equipment: BLI's dedicated test network in Europe, consisting of Windows 2008 servers, Windows 7 workstations, 10/100/1000BaseTX network switches and CAT5e/6 cabling. BLI's daily test usage is designed to replicate real-world use over an eight-hour workday, and as such includes a mix of various-size documents, simplex and duplex modes, and a mix of short, moderate and long run lengths, and on/off cycles, throughout the day.

Test Duration: Products are tested for two months, three weeks of which consists of a durability test during which the product is run at half of its manufacturer-rated maximum monthly volume. BLI's daily test usage is designed to replicate real-world use over an eight-hour workday, and as such includes a mix of various-size documents, simplex and duplex modes, and a mix of short, moderate and long run lengths, and on/off cycles, throughout the day. All products lab tested by BLI are powered by dedicated circuits that are protected by ESP (Electronic Systems Protection, Inc.) surge protectors to prevent transient power and communication disturbances from affecting equipment under test.

Tested Configuration: KYOCERA ECOSYS M3540idn base unit, plus four optional 500-sheet paper drawers.

Test Procedures: The test methods and procedures employed by BLI in its lab testing include BLI's proprietary procedures and industry-standard test procedures, including a BLI-developed variation of ASTM's 1318-90 Test Method for Determination of Productivity using Electrostatic Copy Machines. In addition to a number of proprietary test documents, BLI uses an industry-standard KATUN test original for evaluating black image quality and test suites from Quality Logic to evaluate applications compatibility. In addition to a visual observation, gamut size and stability are tested using a 1,400 colour test target, which is read using an EFI ES-1000 colour spectrophotometer and assessed using Chromix Color Think Pro v3.0 software. In addition, density of black and colour output is measured using an X-Rite 508 Densitometer. Units are tested for compatibility on Windows 7 with Microsoft Office Suite 2010, as well as Adobe Acrobat Reader 10.0.

BUYERS LABORATORY LLC • North America • Europe • Asia

Gerry Stoia, CEO

Anthony F. Polifrone,
Managing Director

Gerry O'Rourke, Managing
Director, BLI International

Patti Clyne,
Senior VP of Sales

Daria Hoffman,
Managing Editor

Dr. Simon Plumtree,
European Managing Editor

Tracie Hines, Senior Editor,
Competitive Analysis Reports

Jamie Bsales,
Senior Product Editor, Solutions

George Mikolay,
Senior Product Editor, A3 MFPs

Marlene Orr, Senior Analyst,
Printers and A4 MFPs

Lisa Reider, Senior
Product Editor, Scanners
and Environmental

Carl Schell, Senior Writer

Priya Gohil, Senior Editor

Jessica Schiftenhaus,
Associate Editor

Kaitlin Pendagast,
Research Editor

David Sweetnam,
Head of European Research
and Lab Services

Pete Emory, Director of
Laboratory Operations

Martin Soane,
European Lab Manager

Pia Beddiges, Manager
of Competitive Services

Anthony Marchesini,
IT Director

T.R. Patrick, Art Director

CERTIFICATE OF RELIABILITY

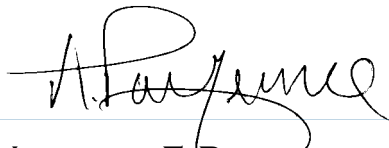
AWARDED TO

KYOCERA Document Solutions Europe B.V.

for the performance of the

KYOCERA ECOSYS M3540idn

in BLI's in-house durability test



ANTHONY F. POLIFRONE
MANAGING DIRECTOR



OCTOBER 2014

DATE

This is to certify that when subjected to a 75,000-impression Buyers Lab durability test, the KYOCERA ECOSYS M3540idn proved to be a highly reliable product.

BUYERS LABORATORY LLC

THE LEADING INDEPENDENT OFFICE PRODUCTS TEST LAB AND BUSINESS CONSUMER ADVOCATE

NORTH AMERICA ■ EUROPE ■ ASIA ■ www.BuyersLab.com

COPYRIGHT ©2014 BUYERS LABORATORY. REPRODUCED WITH THE WRITTEN PERMISSION OF BLI.